

A21458

Leader in Biomolecular Solutions for Life Science



## cIAP1 Rabbit pAb

Catalog No.: A21458

### Basic Information

#### Observed MW

Refer to figures

#### Calculated MW

70kDa

#### Category

Polyclonal Antibody

#### Applications

WB, IHC-P, ELISA

#### Cross-Reactivity

Human, Rat

### Background

The protein encoded by this gene is a member of a family of proteins that inhibits apoptosis by binding to tumor necrosis factor receptor-associated factors TRAF1 and TRAF2, probably by interfering with activation of ICE-like proteases. This encoded protein inhibits apoptosis induced by serum deprivation and menadione, a potent inducer of free radicals. Alternatively spliced transcript variants encoding different isoforms have been found for this gene.

### Recommended Dilutions

WB	1:500 - 1:1000
IHC-P	1:50 - 1:200

### Immunogen Information

#### Gene ID

329

#### Swiss Prot

Q13490

#### Immunogen

Recombinant fusion protein containing a sequence corresponding to amino acids 331-420 of human cIAP1 (NP\_001157.1).

#### Synonyms

API1; MIHB; HIAP2; RNF48; cIAP1; Hiap-2; c-IAP1

### Contact



[www.abclonal.com](http://www.abclonal.com)

### Product Information

#### Source

Rabbit

#### Isotype

IgG

#### Purification

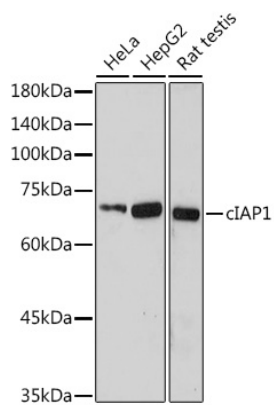
Affinity purification

#### Storage

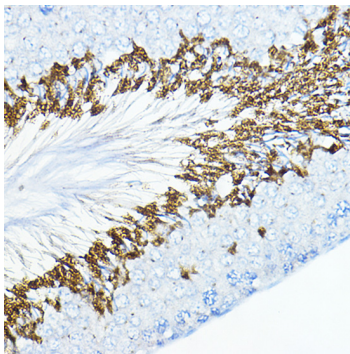
Store at -20°C. Avoid freeze / thaw cycles.

Buffer: PBS with 0.01% thimerosal, 50% glycerol, pH7.3.

## Validation Data



Western blot analysis of various lysates using cIAP1 Rabbit pAb (A21458) at 1:1000 dilution.  
Secondary antibody: HRP Goat Anti-Rabbit IgG (H+L) (AS014) at 1:10000 dilution.  
Lysates/proteins: 25µg per lane.  
Blocking buffer: 3% nonfat dry milk in TBST.  
Detection: ECL Enhanced Kit (RM00021).  
Exposure time: 180s.



Immunohistochemistry analysis of cIAP1 in paraffin-embedded rat testis using cIAP1 Rabbit pAb (A21458) at dilution of 1:100 (40x lens). Perform high pressure antigen retrieval with 10 mM citrate buffer pH 6.0 before commencing with IHC staining protocol.