

A2144

Leader in Biomolecular Solutions for Life Science



## MALT1 Rabbit pAb

Catalog No.: A2144

2 Publications

### Basic Information

#### Observed MW

102kDa

#### Calculated MW

92kDa

#### Category

Polyclonal Antibody

#### Applications

WB, IF/ICC, ELISA

#### Cross-Reactivity

Human, Mouse, Rat

### Background

This gene encodes a caspase-like protease that plays a role in BCL10-induced activation of NF-kappaB. The protein is a component of the CARMA1-BCL10-MALT1 (CBM) signalosome that triggers NF-kappaB signaling and lymphocyte activation following antigen-receptor stimulation. Mutations in this gene result in immunodeficiency 12 (IMD12). This gene has been found to be recurrently rearranged in chromosomal translocations with other genes in mucosa-associated lymphoid tissue lymphomas, including a t(11;18)(q21;q21) translocation with the baculoviral IAP repeat-containing protein 3 (also known as apoptosis inhibitor 2) locus [BIRC3(API2)-MALT1], and a t(14;18)(q32;q21) translocation with the immunoglobulin heavy chain locus (IGH-MALT1). Alternatively spliced transcript variants have been described for this gene.

### Recommended Dilutions

WB	1:500 - 1:2000
IF/ICC	1:50 - 1:200

### Immunogen Information

#### Gene ID

10892

#### Swiss Prot

Q9UDY8

#### Immunogen

Recombinant fusion protein containing a sequence corresponding to amino acids 125-450 of human MALT1 (NP\_776216.1).

#### Synonyms

MLT; MLT1; IMD12; PCASP1; MALT1

### Contact



[www.abclonal.com](http://www.abclonal.com)

### Product Information

#### Source

Rabbit

#### Isotype

IgG

#### Purification

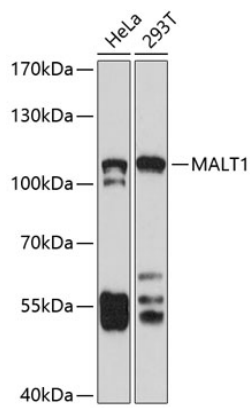
Affinity purification

#### Storage

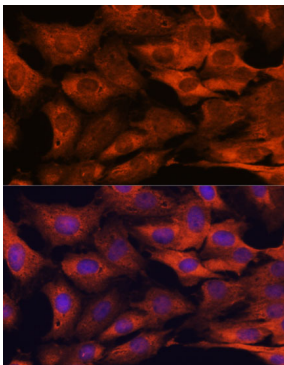
Store at -20°C. Avoid freeze / thaw cycles.

Buffer: PBS with 0.01% thimerosal, 50% glycerol, pH7.3.

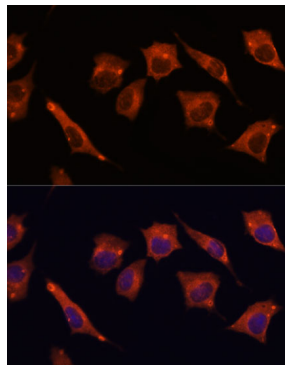
## Validation Data



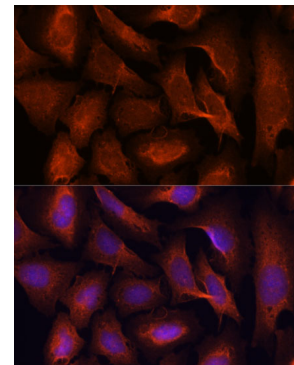
Western blot analysis of various lysates using MALT1 Rabbit pAb (A2144) at 1:1000 dilution.  
Secondary antibody: HRP Goat Anti-Rabbit IgG (H+L) (AS014) at 1:10000 dilution.  
Lysates/proteins: 25µg per lane.  
Blocking buffer: 3% nonfat dry milk in TBST.  
Detection: ECL Basic Kit (RM00020).  
Exposure time: 90s.



Immunofluorescence analysis of C6 cells using MALT1 Rabbit pAb (A2144) at dilution of 1:100. Secondary antibody: Cy3 Goat Anti-Rabbit IgG (H+L) (AS007) at 1:500 dilution. Blue: DAPI for nuclear staining.



Immunofluorescence analysis of L929 cells using MALT1 Rabbit pAb (A2144) at dilution of 1:100. Secondary antibody: Cy3 Goat Anti-Rabbit IgG (H+L) (AS007) at 1:500 dilution. Blue: DAPI for nuclear staining.



Immunofluorescence analysis of U-2 OS cells using MALT1 Rabbit pAb (A2144) at dilution of 1:100. Secondary antibody: Cy3 Goat Anti-Rabbit IgG (H+L) (AS007) at 1:500 dilution. Blue: DAPI for nuclear staining.