

A2143

Leader in Biomolecular Solutions for Life Science



GAS2L1 Rabbit pAb

Catalog No.: A2143

Basic Information

Observed MW

58kDa

Calculated MW

73kDa

Category

Polyclonal Antibody

Applications

WB, ELISA

Cross-Reactivity

Human

Background

This gene encodes a member of the growth arrest-specific 2 protein family. This protein binds components of the cytoskeleton and may be involved in mediating interactions between microtubules and microfilaments. This protein localizes to the proximal end of mature centrioles and links centrosomes to both microtubules and actin. Alternate splicing results in multiple transcript variants. A pseudogene of this gene is found on chromosome 9.

Recommended Dilutions

WB 1:500 - 1:2000

Immunogen Information

Gene ID

10634

Swiss Prot

Q99501

Immunogen

Recombinant fusion protein containing a sequence corresponding to amino acids 130-400 of human GAS2L1 (NP_006469.2).

Synonyms

GAR22; GAS2L1

Contact



www.abclonal.com

Product Information

Source

Rabbit

Isotype

IgG

Purification

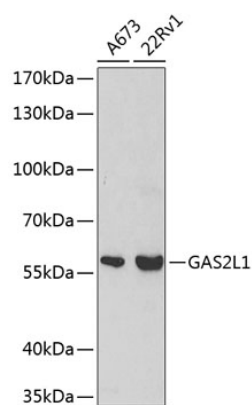
Affinity purification

Storage

Store at -20°C. Avoid freeze / thaw cycles.

Buffer: PBS with 0.02% sodium azide, 50% glycerol, pH 7.3.

Validation Data



Western blot analysis of various lysates using GAS2L1 Rabbit pAb (A2143) at 1:500 dilution.
Secondary antibody: HRP Goat Anti-Rabbit IgG (H+L) (AS014) at 1:10000 dilution.
Lysates/proteins: 25µg per lane.
Blocking buffer: 3% nonfat dry milk in TBST.