

A21428

Leader in Biomolecular Solutions for Life Science



## PHGDH Rabbit pAb

Catalog No.: A21428

### Basic Information

**Observed MW**

57kDa

**Calculated MW**

57kDa

**Category**

Polyclonal Antibody

**Applications**

WB, ELISA

**Cross-Reactivity**

Human, Mouse, Rat

### Background

This gene encodes the enzyme which is involved in the early steps of L-serine synthesis in animal cells. L-serine is required for D-serine and other amino acid synthesis. The enzyme requires NAD/NADH as a cofactor and forms homotetramers for activity. Mutations in this gene have been found in a family with congenital microcephaly, psychomotor retardation and other symptoms. Multiple alternatively spliced transcript variants have been found, however the full-length nature of most are not known.

### Recommended Dilutions

WB 1:500 - 1:2000

### Immunogen Information

**Gene ID**

26227

**Swiss Prot**

O43175

**Immunogen**

Recombinant fusion protein containing a sequence corresponding to amino acids 264-533 of human PHGDH (NP\_006614.2).

**Synonyms**

NLS; PDG; PGD; NLS1; PGAD; PGDH; SERA; 3PGDH; 3-PGDH; PHGDHD; HEL-S-113; PHGDH

### Contact



[www.abclonal.com](http://www.abclonal.com)

### Product Information

**Source**

Rabbit

**Isotype**

IgG

**Purification**

Affinity purification

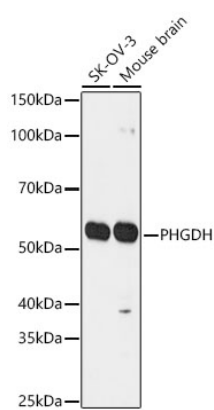
**Storage**

Store at -20°C. Avoid freeze / thaw cycles.

Buffer: PBS with 0.02% sodium azide, 50% glycerol, pH 7.3.

## Validation Data

---



Western blot analysis of various lysates using PHGDH Rabbit pAb (A21428) at 1:1000 dilution.  
Secondary antibody: HRP Goat Anti-Rabbit IgG (H+L) (A5014) at 1:10000 dilution.  
Lysates / proteins: 25 µg per lane.  
Blocking buffer: 3 % nonfat dry milk in TBST.  
Detection: ECL Basic Kit (RM00020).  
Exposure time: 90s.