

A21349

Leader in Biomolecular Solutions for Life Science



## HIBADH Rabbit pAb

Catalog No.: A21349

### Basic Information

**Observed MW**

35kDa

**Calculated MW**

35kDa

**Category**

Polyclonal Antibody

**Applications**

WB, IHC-P, IF/ICC, ELISA

**Cross-Reactivity**

Human, Mouse, Rat

### Background

This gene encodes a mitochondrial 3-hydroxyisobutyrate dehydrogenase enzyme. The encoded protein plays a critical role in the catabolism of L-valine by catalyzing the oxidation of 3-hydroxyisobutyrate to methylmalonate semialdehyde.

### Recommended Dilutions

WB	1:1000 - 1:5000
IHC-P	1:50 - 1:200
IF/ICC	1:50 - 1:200

### Immunogen Information

**Gene ID**

11112

**Swiss Prot**

P31937

**Immunogen**

Recombinant fusion protein containing a sequence corresponding to amino acids 37-336 of human HIBADH (NP\_689953.1).

**Synonyms**

NS5ATP1; HIBADH

### Contact



[www.abclonal.com](http://www.abclonal.com)

### Product Information

**Source**

Rabbit

**Isotype**

IgG

**Purification**

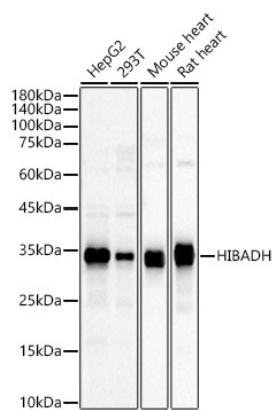
Affinity purification

**Storage**

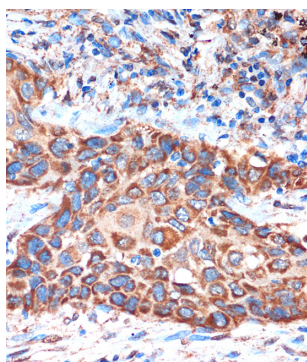
Store at -20°C. Avoid freeze / thaw cycles.

Buffer: PBS with 0.01% thimerosal, 50% glycerol, pH7.3.

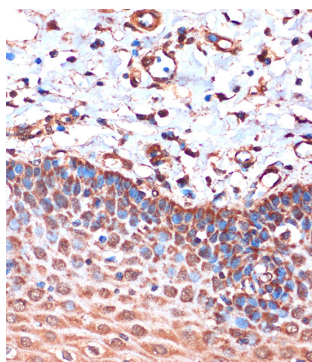
## Validation Data



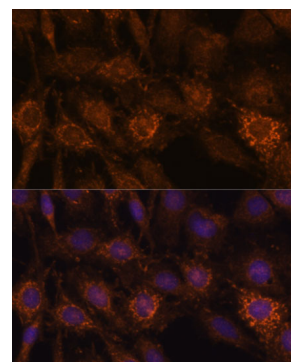
Western blot analysis of various lysates, using HIBADH Rabbit pAb (A21349) at 1:2000 dilution. Secondary antibody: HRP Goat Anti-Rabbit IgG (H+L) (A5014) at 1:10000 dilution. Lysates/proteins: 25µg per lane. Blocking buffer: 3% nonfat dry milk in TBST. Detection: ECL Basic Kit (RM00020). Exposure time: 30s.



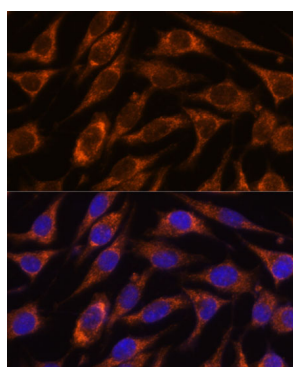
Immunohistochemistry analysis of paraffin-embedded Human lung cancer using HIBADH Rabbit pAb (A21349) at dilution of 1:100 (40x lens). Perform microwave antigen retrieval with 10 mM PBS buffer pH 7.2 before commencing with IHC staining protocol.



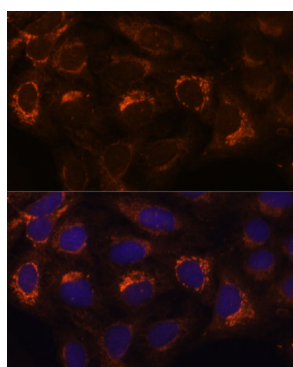
Immunohistochemistry analysis of paraffin-embedded Human esophageal using HIBADH Rabbit pAb (A21349) at dilution of 1:100 (40x lens). Perform microwave antigen retrieval with 10 mM PBS buffer pH 7.2 before commencing with IHC staining protocol.



Immunofluorescence analysis of C6 cells using HIBADH antibody (A21349) at dilution of 1:100. Blue: DAPI for nuclear staining.



Immunofluorescence analysis of L929 cells using HIBADH antibody (A21349) at dilution of 1:100. Blue: DAPI for nuclear staining.



Immunofluorescence analysis of U-2 OS cells using HIBADH antibody (A21349) at dilution of 1:100. Blue: DAPI for nuclear staining.