

A21278

Leader in Biomolecular Solutions for Life Science



COR28 Rabbit pAb

Catalog No.: A21278

Basic Information

Observed MW

30kDa

Calculated MW

25kDa

Category

Polyclonal Antibody

Applications

WB, ELISA

Cross-Reactivity

Arabidopsis thaliana

Background

Light and temperature are two key environmental signals that profoundly affect plant growth and development. COR28 and COR27 are negative regulators of freezing tolerance but positive regulators of flowering. They are involved in central circadian clock regulation and in flowering promotion, by binding to the chromatin of clock-associated evening genes TOC1, PRR5, ELF4 and cold-responsive genes in order to repress their transcription. And also are direct targets of CCA1, which represses their transcription via chromatin binding.

Recommended Dilutions

WB 1:500 - 1:1000

Immunogen Information

Gene ID

829544

Swiss Prot

Q8L983

Immunogen

Recombinant fusion protein containing a sequence corresponding to amino acids 50-170 of arabidopsis thaliana COR28 (NP_567946.1).

Synonyms

F17I5.170; F17I5_170; COR28

Contact



www.abclonal.com

Product Information

Source

Rabbit

Isotype

IgG

Purification

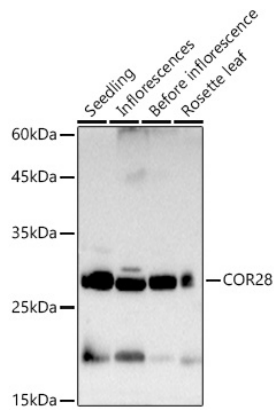
Affinity purification

Storage

Store at -20°C. Avoid freeze / thaw cycles.

Buffer: PBS with 0.05% proclin300, 50% glycerol, pH7.3.

Validation Data



Western blot analysis of extracts of various tissues from *Arabidopsis thaliana*, using COR28 Rabbit pAb (A21278) at 1:1000 dilution.
Secondary antibody: HRP Goat Anti-Rabbit IgG (H+L) (AS014) at 1:10000 dilution.
Lysates/proteins: 25µg per lane.
Blocking buffer: 3% nonfat dry milk in TBST.
Detection: ECL Basic Kit (RM00020).
Exposure time: 30s.