

A21263

Leader in Biomolecular Solutions for Life Science



## Interferon alpha 2 (IFN- $\alpha$ 2) Rabbit mAb

Catalog No.: A21263 **Recombinant**

### Basic Information

#### Observed MW

20kDa

#### Calculated MW

22kDa

#### Category

SMab Recombinant Monoclonal Antibody

#### Applications

WB, IHC-P, ELISA

#### Cross-Reactivity

Human, Mouse, Rat

#### CloneNo number

ARC53291

### Background

This gene is a member of the alpha interferon gene cluster on chromosome 9. The encoded cytokine is a member of the type I interferon family that is produced in response to viral infection as a key part of the innate immune response with potent antiviral, antiproliferative and immunomodulatory properties. This cytokine, like other type I interferons, binds a plasma membrane receptor made of IFNAR1 and IFNAR2 that is ubiquitously expressed, and thus is able to act on virtually all body cells. The encoded protein is effective in reducing the symptoms and duration of the common cold and in treating many types of cancer, including some hematological malignancies and solid tumors. A deficiency of type I interferon in the blood is thought to be a hallmark of severe COVID-19 and may provide a rationale for a combined therapeutic approach.

### Recommended Dilutions

WB 1:2000 - 1:6000

IHC-P 1:50 - 1:200

### Immunogen Information

#### Gene ID

3440

#### Swiss Prot

P01563

#### Immunogen

Recombinant fusion protein containing a sequence corresponding to amino acids 24-188 of human Interferon alpha 2 (IFN- $\alpha$ 2) (NP\_000596.2).

#### Synonyms

IFNA; IFNA2B; IeIF A; IFN-alphaA; IFN-alpha-2; Interferon alpha 2 (IFN- $\alpha$ 2)

### Contact



[www.abclonal.com](http://www.abclonal.com)

### Product Information

#### Source

Rabbit

#### Isotype

IgG

#### Purification

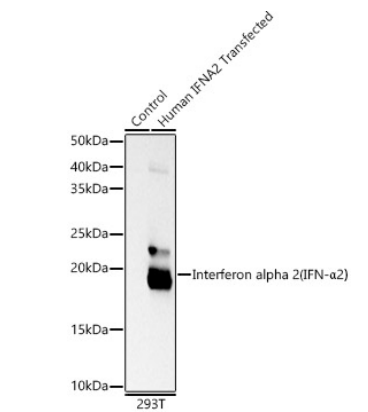
Affinity purification

#### Storage

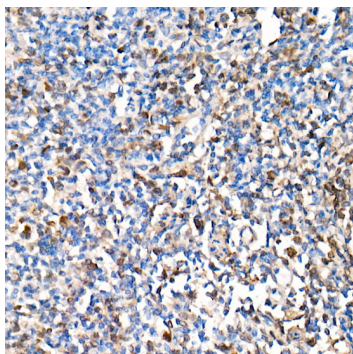
Store at -20°C. Avoid freeze / thaw cycles.

Buffer: PBS with 0.05% proclin300, 0.05% BSA, 50% glycerol, pH7.3.

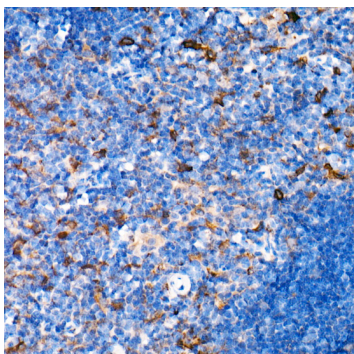
Validation Data



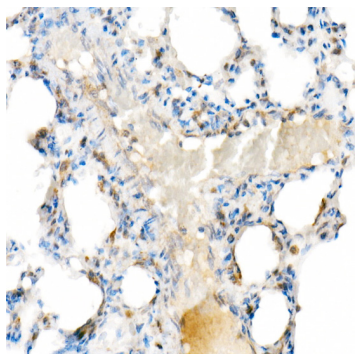
Western blot analysis of lysates from wild type (WT) and 293T cells transfected with IFN-α2 using Interferon alpha 2 (IFN-α2) Rabbit mAb (A21263) at 1:5000 dilution.  
Secondary antibody: HRP Goat Anti-Rabbit IgG (H+L) (AS014) at 1:5000 dilution.  
Lysates/proteins: 25µg per lane.  
Blocking buffer: 3% nonfat dry milk in TBST.  
Detection: ECL Basic Kit (RM00020).  
Exposure time: 0.5s.



Immunohistochemistry analysis of Interferon alpha 2 (IFN-α2) in paraffin-embedded human tonsil using Interferon alpha 2 (IFN-α2) Rabbit mAb (A21263) at dilution of 1:200 (40x lens).Perform high pressure antigen retrieval with 10 mM citrate buffer pH 7.2 before commencing with IHC staining protocol.



Immunohistochemistry analysis of Interferon alpha 2 (IFN-α2) in paraffin-embedded mouse thymus using Interferon alpha 2 (IFN-α2) Rabbit mAb (A21263) at dilution of 1:200 (40x lens).Perform high pressure antigen retrieval with 10 mM citrate buffer pH 7.2 before commencing with IHC staining protocol.



Immunohistochemistry analysis of Interferon alpha 2 (IFN-α2) in paraffin-embedded rat lung using Interferon alpha 2 (IFN-α2) Rabbit mAb (A21263) at dilution of 1:200 (40x lens).Perform high pressure antigen retrieval with 10 mM citrate buffer pH 7.2 before commencing with IHC staining protocol.