

A21253

Leader in Biomolecular Solutions for Life Science



## ATR Rabbit mAb

Catalog No.: A21253

Recombinant

### Basic Information

#### Observed MW

301kDa

#### Calculated MW

301kDa

#### Category

SMab Recombinant Monoclonal Antibody

#### Applications

WB, ELISA

#### Cross-Reactivity

Human, Mouse

#### CloneNo number

ARC51749

### Background

The protein encoded by this gene is a serine/threonine kinase and DNA damage sensor, activating cell cycle checkpoint signaling upon DNA stress. The encoded protein can phosphorylate and activate several proteins involved in the inhibition of DNA replication and mitosis, and can promote DNA repair, recombination, and apoptosis. This protein is also important for fragile site stability and centrosome duplication. Defects in this gene are a cause of Seckel syndrome 1.

### Recommended Dilutions

WB 1:500 - 1:1000

### Immunogen Information

#### Gene ID

545

#### Swiss Prot

Q13535

#### Immunogen

A synthetic peptide corresponding to a sequence within amino acids 2100-2200 of human ATR (NP\_001175.2).

#### Synonyms

FRP1; MEC1; SCKL; FCTCS; SCKL1; ATR

### Contact



[www.abclonal.com](http://www.abclonal.com)

### Product Information

#### Source

Rabbit

#### Isotype

IgG

#### Purification

Affinity purification

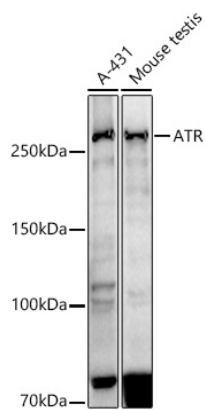
#### Storage

Store at -20°C. Avoid freeze / thaw cycles.

Buffer: PBS with 0.05% proclin300, 0.05% BSA, 50% glycerol, pH7.3.

## Validation Data

---



Western blot analysis of extracts of various cell lines, using ATR antibody (A21253) at 1:1000 dilution.  
Secondary antibody: HRP Goat Anti-Rabbit IgG (H+L) (A5014) at 1:10000 dilution.  
Lysates/proteins: 25µg per lane.  
Blocking buffer: 3% nonfat dry milk in TBST.  
Detection: ECL Basic Kit (RM00020).  
Exposure time: 180s.