

A21120

Leader in Biomolecular Solutions for Life Science



PRD Rabbit mAb

Catalog No.: A21120

Recombinant

Basic Information

Observed MW

60kDa

Calculated MW

55kDa

Category

SMab Recombinant Monoclonal Antibody

Applications

WB, ELISA

Cross-Reactivity

Human, Mouse

CloneNo number

ARC3002

Background

This gene encodes a member of the peptidase family. The protein forms a homodimer that hydrolyzes dipeptides or tripeptides with C-terminal proline or hydroxyproline residues. The enzyme serves an important role in the recycling of proline, and may be rate limiting for the production of collagen. Mutations in this gene result in prolidase deficiency, which is characterized by the excretion of large amount of di- and tri-peptides containing proline. Multiple transcript variants encoding different isoforms have been found for this gene.

Recommended Dilutions

WB 1:500 - 1:1000

Immunogen Information

Gene ID

5184

Swiss Prot

P12955

Immunogen

Recombinant fusion protein containing a sequence corresponding to amino acids 400-493 of human PRD (NP_000276.2).

Synonyms

PROLIDASE; PRD

Contact



www.abclonal.com

Product Information

Source

Rabbit

Isotype

IgG

Purification

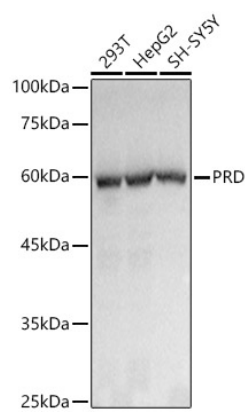
Affinity purification

Storage

Store at -20°C. Avoid freeze / thaw cycles.

Buffer: PBS with 0.02% sodium azide, 0.05% BSA, 50% glycerol, pH7.3.

Validation Data



Western blot analysis of various lysates using PRD Rabbit mAb (A21120) at 1:1000 dilution.
Secondary antibody: HRP Goat Anti-Rabbit IgG (H+L) (AS014) at 1:10000 dilution.
Lysates/proteins: 25µg per lane.
Blocking buffer: 3% nonfat dry milk in TBST.
Detection: ECL Basic Kit (RM00020).
Exposure time: 1s.

Western blot analysis of lysates from Mouse small intestine, using PRD Rabbit mAb (A21120) at 1:1000 dilution.
Secondary antibody: HRP Goat Anti-Rabbit IgG (H+L) (AS014) at 1:10000 dilution.
Lysates/proteins: 25µg per lane.
Blocking buffer: 3% nonfat dry milk in TBST.
Detection: ECL Basic Kit (RM00020).
Exposure time: 180s.

