

A21106

Leader in Biomolecular Solutions for Life Science



[KO Validated] PRMT4/CARM1 Rabbit mAb

Catalog No.: A21106

KO Validated

Recombinant

Basic Information

Observed MW

60kDa/63kDa

Calculated MW

66kDa

Category

SMab Recombinant Monoclonal Antibody

Applications

WB,IP,ELISA

Cross-Reactivity

Human,Mouse,Rat

CloneNo number

ARC52397

Background

This gene belongs to the protein arginine methyltransferase (PRMT) family. The encoded enzyme catalyzes the methylation of guanidino nitrogens of arginyl residues of proteins. The enzyme acts specifically on histones and other chromatin-associated proteins and is involved in regulation of gene expression. The enzyme may act in association with other proteins or within multi-protein complexes and may play a role in cell type-specific functions and cell lineage specification. A related pseudogene is located on chromosome 9.

Recommended Dilutions

WB 1:500 - 1:1000

IP 0.5µg-4µg antibody for
200µg-400µg extracts of
whole cells

Immunogen Information

Gene ID

10498

Swiss Prot

Q86X55

Immunogen

Recombinant fusion protein containing a sequence corresponding to amino acids 486-603 of human PRMT4/CARM1 (NP_954592.1).

Synonyms

PRMT4; M1

Contact



www.abclonal.com

Product Information

Source

Rabbit

Isotype

IgG

Purification

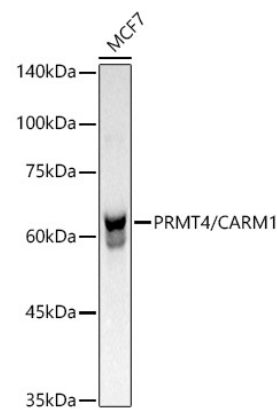
Affinity purification

Storage

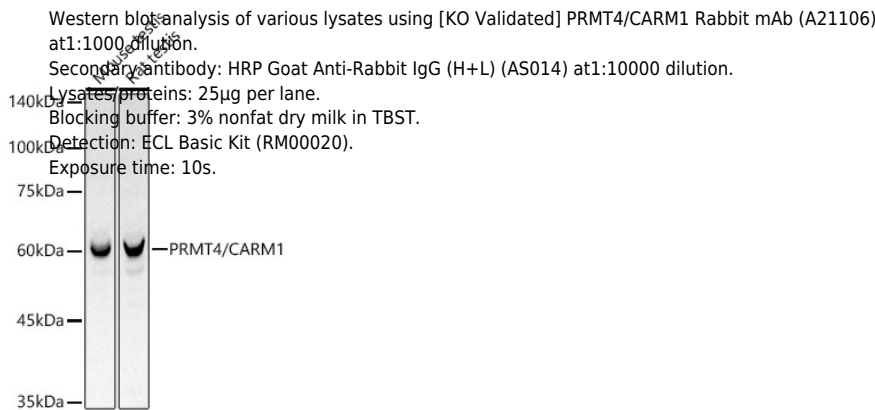
Store at -20°C. Avoid freeze / thaw cycles.

Buffer: PBS with 0.05% proclin300,0.05% BSA,50% glycerol,pH7.3.

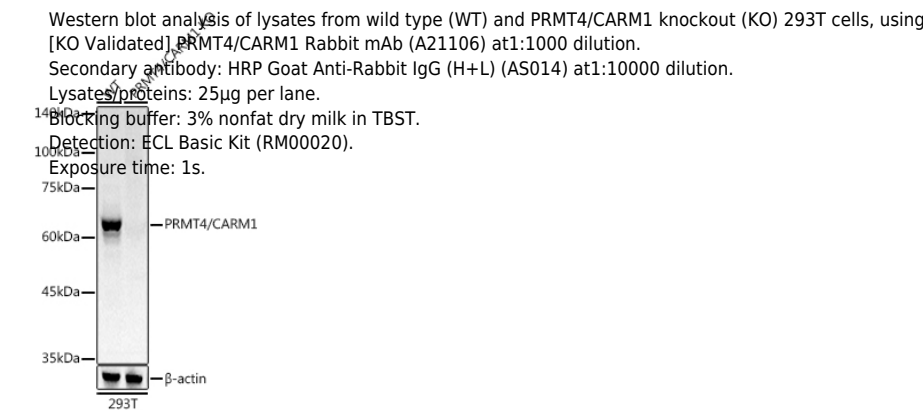
Validation Data



Western blot analysis of lysates from MCF7 cells, using [KO Validated] PRMT4/CARM1 Rabbit mAb (A21106) at1:1000 dilution.
Secondary antibody: HRP Goat Anti-Rabbit IgG (H+L) (AS014) at1:10000 dilution.
Lysates/proteins: 25µg per lane.
Blocking buffer: 3% nonfat dry milk in TBST.
Detection: ECL Basic Kit (RM00020).
Exposure time: 1s.

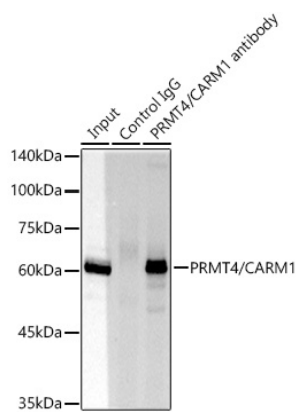


Western blot analysis of various lysates using [KO Validated] PRMT4/CARM1 Rabbit mAb (A21106) at1:1000 dilution.
Secondary antibody: HRP Goat Anti-Rabbit IgG (H+L) (AS014) at1:10000 dilution.
Lysates/proteins: 25µg per lane.
Blocking buffer: 3% nonfat dry milk in TBST.
Detection: ECL Basic Kit (RM00020).
Exposure time: 10s.



Western blot analysis of lysates from wild type (WT) and PRMT4/CARM1 knockout (KO) 293T cells, using [KO Validated] PRMT4/CARM1 Rabbit mAb (A21106) at1:1000 dilution.
Secondary antibody: HRP Goat Anti-Rabbit IgG (H+L) (AS014) at1:10000 dilution.
Lysates/proteins: 25µg per lane.
Blocking buffer: 3% nonfat dry milk in TBST.
Detection: ECL Basic Kit (RM00020).
Exposure time: 1s.

Validation Data



Immunoprecipitation analysis of 300 µg extracts of 293T cells using 3 µg PRMT4/CARM1 antibody (A21106). Western blot was performed from the immunoprecipitate using PRMT4/CARM1 antibody (A21106) at a dilution of 1:1000.