

A21054

Leader in Biomolecular Solutions for Life Science



von Willebrand factor (VWF) Rabbit mAb

Catalog No.: A21054 **Recombinant**

Basic Information

Observed MW

Refer to figures

Calculated MW

309kDa

Category

SMab Recombinant Monoclonal Antibody

Applications

IHC-P,ELISA

Cross-Reactivity

Human,Mouse

CloneNo number

ARC52173

Background

This gene encodes a glycoprotein involved in hemostasis. The encoded preproprotein is proteolytically processed following assembly into large multimeric complexes. These complexes function in the adhesion of platelets to sites of vascular injury and the transport of various proteins in the blood. Mutations in this gene result in von Willebrand disease, an inherited bleeding disorder. An unprocessed pseudogene has been found on chromosome 22.

Recommended Dilutions

IHC-P 1:500 - 1:1000

Immunogen Information

Gene ID

7450

Swiss Prot

P04275

Immunogen

Recombinant fusion protein containing a sequence corresponding to amino acids 2645-2813 of human von Willebrand factor (VWF) (NP_000543.3).

Synonyms

VWD; F8VWF; von Willebrand factor (VWF)

Contact



www.abclonal.com

Product Information

Source

Rabbit

Isotype

IgG

Purification

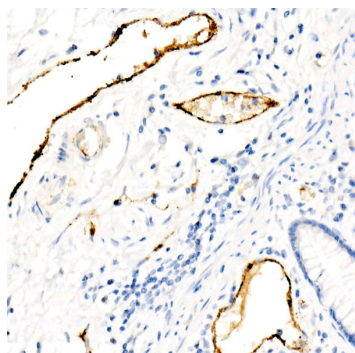
Affinity purification

Storage

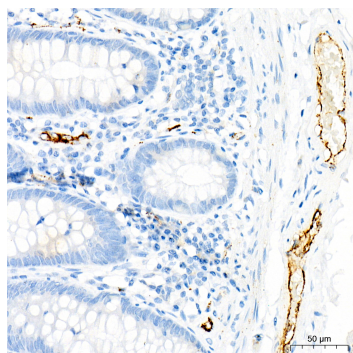
Store at -20°C. Avoid freeze / thaw cycles.

Buffer: PBS with 0.05% proclin300,0.05% BSA,50% glycerol,pH7.3.

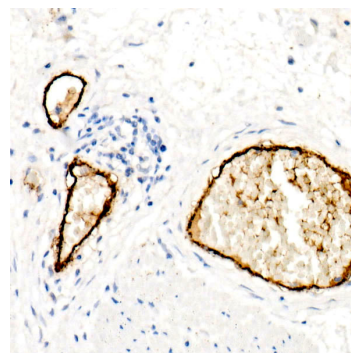
Validation Data



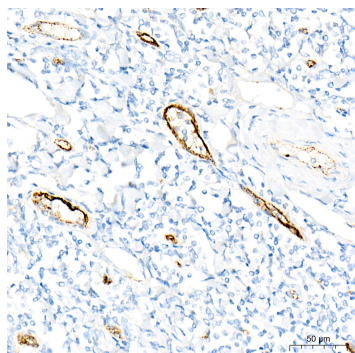
Immunohistochemistry analysis of paraffin-embedded human colon carcinoma using von Willebrand factor (VWF) Rabbit mAb (A21054) at dilution of 1:800 (40x lens). Perform high pressure antigen retrieval with 10 mM citrate buffer pH 6.0 before commencing with IHC staining protocol.



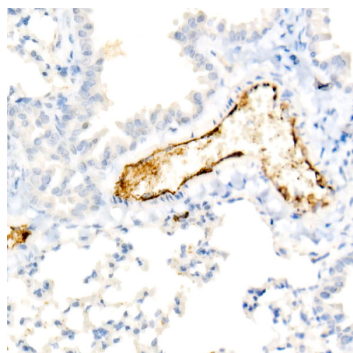
Immunohistochemistry analysis of paraffin-embedded human colon using von Willebrand factor (VWF) Rabbit mAb (A21054) at dilution of 1:800 (40x lens). Perform high pressure antigen retrieval with 10 mM citrate buffer pH 6.0 before commencing with IHC staining protocol.



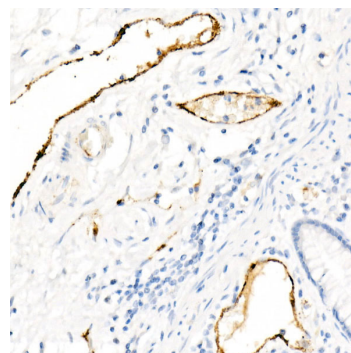
Immunohistochemistry analysis of paraffin-embedded human esophageal cancer using von Willebrand factor (VWF) Rabbit mAb (A21054) at dilution of 1:800 (40x lens). Perform high pressure antigen retrieval with 10 mM citrate buffer pH 6.0 before commencing with IHC staining protocol.



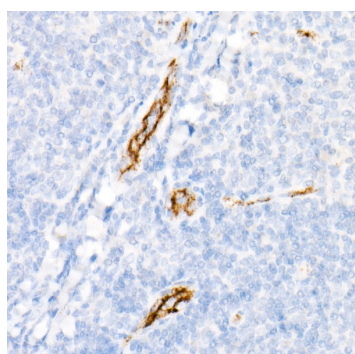
Immunohistochemistry analysis of paraffin-embedded human tonsil using von Willebrand factor (VWF) Rabbit mAb (A21054) at dilution of 1:800 (40x lens). Perform high pressure antigen retrieval with 10 mM citrate buffer pH 6.0 before commencing with IHC staining protocol.



Immunohistochemistry analysis of paraffin-embedded mouse lung using von Willebrand factor (VWF) Rabbit mAb (A21054) at dilution of 1:800 (40x lens). Perform high pressure antigen retrieval with 10 mM citrate buffer pH 6.0 before commencing with IHC staining protocol.



Immunohistochemistry analysis of paraffin-embedded human colon using von Willebrand factor (VWF) Rabbit mAb (A21054) at dilution of 1:800 (40x lens). Perform high pressure antigen retrieval with 10 mM citrate buffer pH 6.0 before commencing with IHC staining protocol.



Immunohistochemistry analysis of paraffin-embedded human tonsil using von Willebrand factor (VWF) Rabbit mAb (A21054) at dilution of 1:800 (40x lens). Perform high pressure antigen retrieval with 10 mM citrate buffer pH 6.0 before commencing with IHC staining protocol.