

A20957

Leader in Biomolecular Solutions for Life Science



PREB Rabbit mAb

Catalog No.: A20957 **Recombinant**

Basic Information

Observed MW

46kDa

Calculated MW

45kDa

Category

SMab Recombinant Monoclonal Antibody

Applications

WB,IF/ICC,ELISA

Cross-Reactivity

Human,Mouse,Rat

CloneNo number

ARC2945

Background

This gene encodes a protein that specifically binds to a Pit1-binding element of the prolactin (PRL) promoter. This protein may act as a transcriptional regulator and is thought to be involved in some of the developmental abnormalities observed in patients with partial trisomy 2p. This gene overlaps the abhydrolase domain containing 1 (ABHD1) gene on the opposite strand.

Recommended Dilutions

WB 1:500 - 1:1000

IF/ICC 1:50 - 1:200

Immunogen Information

Gene ID

10113

Swiss Prot

Q9HCU5

Immunogen

Recombinant fusion protein containing a sequence corresponding to amino acids 89-201 of human PREB (NP_037520.1).

Synonyms

SEC12; PREB

Contact



www.abclonal.com

Product Information

Source

Rabbit

Isotype

IgG

Purification

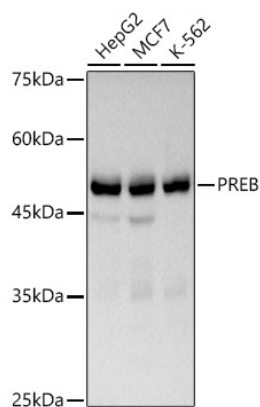
Affinity purification

Storage

Store at -20°C. Avoid freeze / thaw cycles.

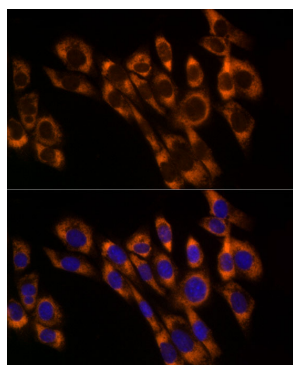
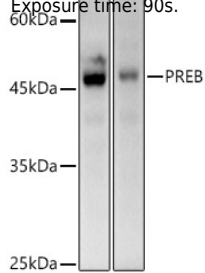
Buffer: PBS with 0.02% sodium azide,0.05% BSA,50% glycerol,pH7.3.

Validation Data

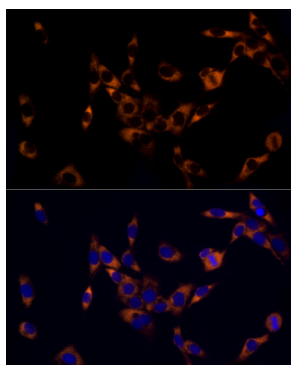


Western blot analysis of extracts of various cell lines, using PREB antibody (A20957) at 1:1000 dilution.
 Secondary antibody: HRP Goat Anti-Rabbit IgG (H+L) (A5014) at 1:10000 dilution.
 Lysates/proteins: 25µg per lane.
 Blocking buffer: 3% nonfat dry milk in TBST.
 Detection: ECL Basic Kit (RM00020).
 Exposure time: 30s.

Western blot analysis of extracts of various cell lines, using PREB antibody (A20957) at 1:1000 dilution.
 Secondary antibody: HRP Goat Anti-Rabbit IgG (H+L) (A5014) at 1:10000 dilution.
 Lysates/proteins: 25µg per lane.
 Blocking buffer: 3% nonfat dry milk in TBST.
 Detection: ECL Enhanced Kit (RM00021).
 Exposure time: 90s.



Immunofluorescence analysis of NIH/3T3 cells using PREB Rabbit mAb (A20957) at dilution of 1:50 (40x lens). Blue: DAPI for nuclear staining.



Immunofluorescence analysis of PC-12 cells using PREB Rabbit mAb (A20957) at dilution of 1:50 (40x lens). Blue: DAPI for nuclear staining.