

## [KO Validated] MMP9 Polyclonal Antibody

<b>Catalog No.</b>	A2095	<b>Category</b>	Polyclonal Antibodies
<b>Applications</b>	WB, IF	<b>Observed MW</b>	110kDa
<b>Cross-reactivity</b>	Human, Mouse, Rat	<b>Calculated MW</b>	78kDa

### Immunogen Information

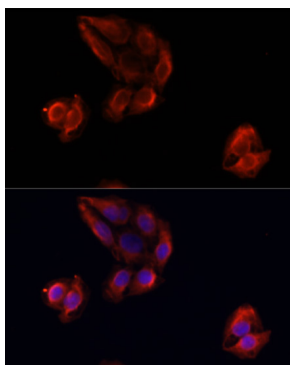
<b>Immunogen</b>	Recombinant fusion protein containing a sequence corresponding to amino acids 538-707 of human MMP9 (NP_004985.2).
<b>Gene ID</b>	4318
<b>Swiss prot</b>	P14780
<b>Synonyms</b>	MMP9; CLG4B; GELB; MANDP2; MMP-9; matrix metallopeptidase 9

### Product information

<b>Source</b>	Rabbit
<b>Isotype</b>	IgG
<b>Purification method</b>	Affinity purification
<b>Storage</b>	Store at -20°C. Avoid freeze / thaw cycles. Buffer: PBS with 0.02% sodium azide, 50% glycerol, pH 7.3.

### Background

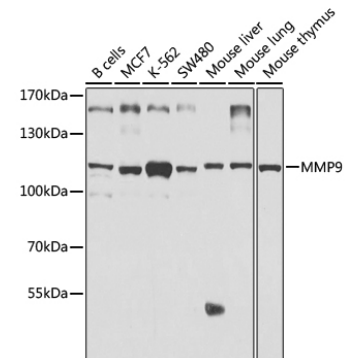
Proteins of the matrix metalloproteinase (MMP) family are involved in the breakdown of extracellular matrix in normal physiological processes, such as embryonic development, reproduction, and tissue remodeling, as well as in disease processes, such as arthritis and metastasis. Most MMP's are secreted as inactive proproteins which are activated when cleaved by extracellular proteinases. The enzyme encoded by this gene degrades type IV and V collagens. Studies in rhesus monkeys suggest that the enzyme is involved in IL-8-induced mobilization of hematopoietic progenitor cells from bone marrow, and murine studies suggest a role in tumor-associated tissue remodeling.



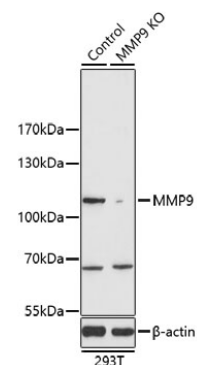
Immunofluorescence analysis of U-2OS cells using MMP9 antibody (A2095) at dilution of 1:100. Blue: DAPI for nuclear staining.

### Recommended Dilutions

WB	1:500 - 1:2000
IF	1:50 - 1:200



Western blot analysis of extracts of various cell lines, using MMP9 antibody (A2095) at 1:1000 dilution. Secondary antibody: HRP Goat Anti-Rabbit IgG (H+L) (AS014) at 1:10000 dilution. Lysates/proteins: 25ug per lane. Blocking buffer: 3% nonfat dry milk in TBST. Detection: ECL Basic Kit (RM00020). Exposure time: 10s.



Western blot analysis of extracts from normal (control) and MMP9 knockout (KO) 293T cells, using MMP9 antibody (A2095) at 1:1000 dilution. Secondary antibody: HRP Goat Anti-Rabbit IgG (H+L) (AS014) at 1:10000 dilution. Lysates/proteins: 25ug per lane. Blocking buffer: 3% nonfat dry milk in TBST. Detection: ECL Basic Kit (RM00020). Exposure time: 90s.