

A20949

Leader in Biomolecular Solutions for Life Science



## PAH Rabbit mAb

Catalog No.: A20949

Recombinant

### Basic Information

#### Observed MW

52kDa

#### Calculated MW

52kDa

#### Category

SMab Recombinant Monoclonal Antibody

#### Applications

WB,IF/ICC,ELISA

#### Cross-Reactivity

Human,Mouse,Rat

#### CloneNo number

ARC2936

### Background

This gene encodes a member of the bipterin-dependent aromatic amino acid hydroxylase protein family. The encoded phenylalanine hydroxylase enzyme hydroxylates phenylalanine to tyrosine and is the rate-limiting step in phenylalanine catabolism. Deficiency of this enzyme activity results in the autosomal recessive disorder phenylketonuria.

### Recommended Dilutions

WB	1:100 - 1:500
IF/ICC	1:50 - 1:200

### Immunogen Information

#### Gene ID

5053

#### Swiss Prot

P00439

#### Immunogen

A synthetic peptide corresponding to a sequence within amino acids 1-100 of human PAH (P00439).

#### Synonyms

PH; PKU; PKU1; PAH

### Contact



[www.abclonal.com](http://www.abclonal.com)

### Product Information

#### Source

Rabbit

#### Isotype

IgG

#### Purification

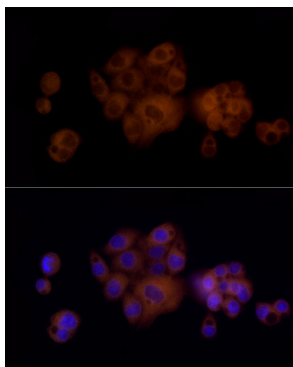
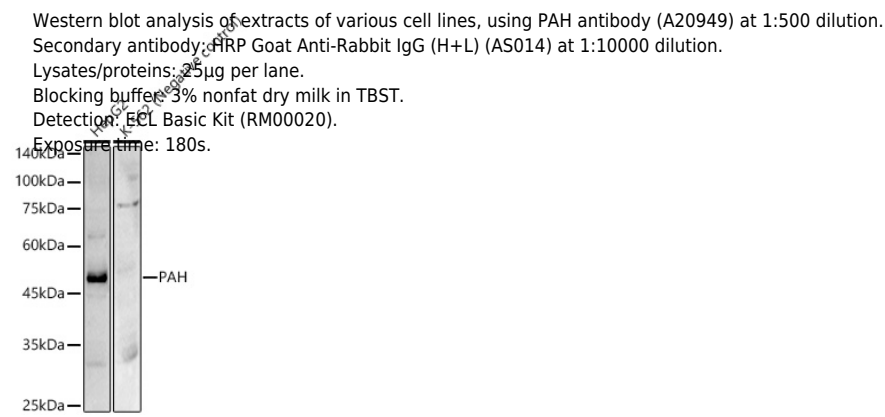
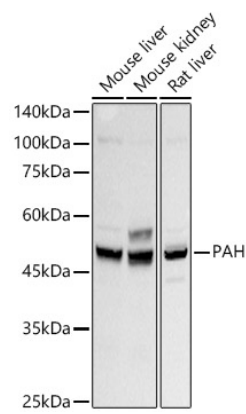
Affinity purification

#### Storage

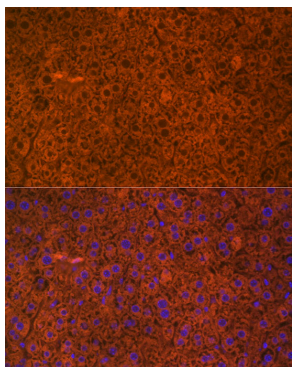
Store at -20°C. Avoid freeze / thaw cycles.

Buffer: PBS with 0.02% sodium azide,0.05% BSA,50% glycerol,pH7.3.

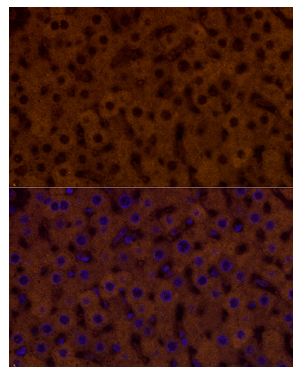
Validation Data



Immunofluorescence analysis of HepG2 cells using PAH Rabbit mAb (A20949) at dilution of 1:20 (40x lens). Blue: DAPI for nuclear staining.



Immunofluorescence analysis of mouse liver using PAH Rabbit mAb (A20949) at dilution of 1:20 (40x lens). Blue: DAPI for nuclear staining.



Immunofluorescence analysis of rat liver using PAH Rabbit mAb (A20949) at dilution of 1:20 (40x lens). Blue: DAPI for nuclear staining.