

A2092

Leader in Biomolecular Solutions for Life Science



Lipocalin-2/NGAL Rabbit pAb

Catalog No.: A2092

16 Publications

Basic Information

Observed MW

20kDa

Calculated MW

23kDa

Category

Polyclonal Antibody

Applications

WB, IHC-P, IF/ICC, ELISA

Cross-Reactivity

Human, Mouse

Background

This gene encodes a protein that belongs to the lipocalin family. Members of this family transport small hydrophobic molecules such as lipids, steroid hormones and retinoids. The protein encoded by this gene is a neutrophil gelatinase-associated lipocalin and plays a role in innate immunity by limiting bacterial growth as a result of sequestering iron-containing siderophores. The presence of this protein in blood and urine is an early biomarker of acute kidney injury. This protein is thought to be involved in multiple cellular processes, including maintenance of skin homeostasis, and suppression of invasiveness and metastasis. Mice lacking this gene are more susceptible to bacterial infection than wild type mice.

Recommended Dilutions

WB	1:500 - 1:1000
IHC-P	1:500 - 1:1000
IF/ICC	1:50 - 1:200

Immunogen Information

Gene ID

3934

Swiss Prot

P80188

Immunogen

Recombinant fusion protein containing a sequence corresponding to amino acids 21-198 of human Lipocalin-2/NGAL (NP_005555.2).

Synonyms

p25; 24p3; MSFI; NGAL; Lipocalin-2/NGAL

Contact



www.abclonal.com

Product Information

Source

Rabbit

Isotype

IgG

Purification

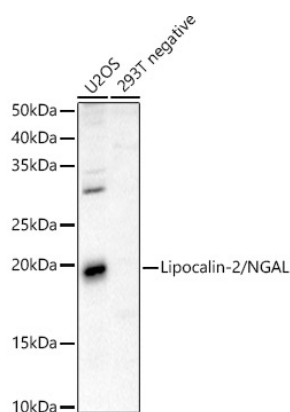
Affinity purification

Storage

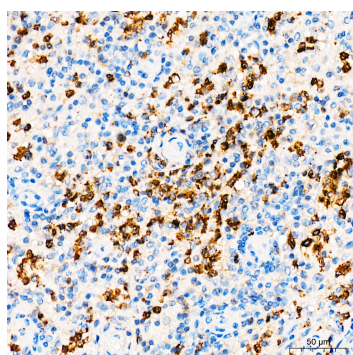
Store at -20°C. Avoid freeze / thaw cycles.

Buffer: PBS with 0.09% Sodium azide, 50% glycerol, pH7.3.

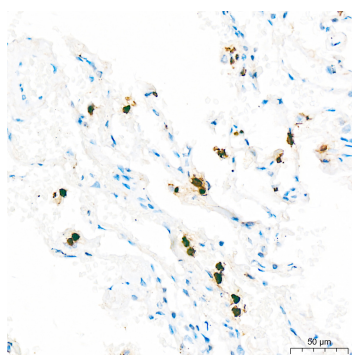
Validation Data



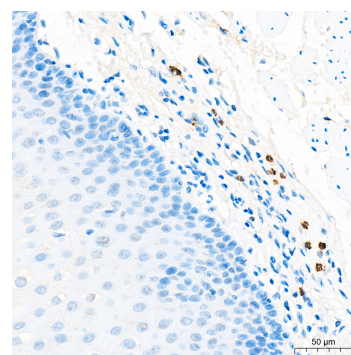
Western blot analysis of various lysates using Lipocalin-2/NGAL Rabbit pAb (A2092) at 1:500 dilution. Secondary antibody: HRP Goat Anti-Rabbit IgG (H+L) (A5014) at 1:10000 dilution. Lysates/proteins: 25µg per lane. Blocking buffer: 3% nonfat dry milk in TBST. Detection: ECL Basic Kit (RM00020). Exposure time: 60s.



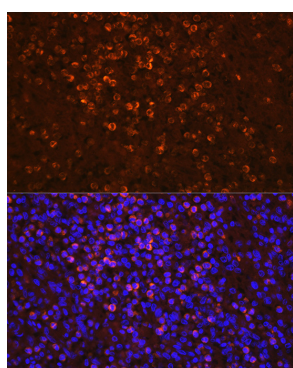
Immunohistochemistry analysis of Lipocalin-2/NGAL in paraffin-embedded human spleen tissue using Lipocalin-2/NGAL Rabbit pAb (A2092) at a dilution of 1:900 (40x lens). High pressure antigen retrieval was performed with 0.01 M citrate buffer (pH 6.0) prior to IHC staining.



Immunohistochemistry analysis of Lipocalin-2/NGAL in paraffin-embedded human lung tissue using Lipocalin-2/NGAL Rabbit pAb (A2092) at a dilution of 1:900 (40x lens). High pressure antigen retrieval was performed with 0.01 M citrate buffer (pH 6.0) prior to IHC staining.



Immunohistochemistry analysis of Lipocalin-2/NGAL in paraffin-embedded human esophagus tissue using Lipocalin-2/NGAL Rabbit pAb (A2092) at a dilution of 1:900 (40x lens). High pressure antigen retrieval was performed with 0.01 M citrate buffer (pH 6.0) prior to IHC staining.



Immunofluorescence analysis of paraffin-embedded human spleen using Lipocalin-2/NGAL Rabbit pAb (A2092) at dilution of 1:100 (40x lens). Secondary antibody: Cy3 Goat Anti-Rabbit IgG (H+L) (A5007) at 1:500 dilution. Blue: DAPI for nuclear staining.