

A20829

Leader in Biomolecular Solutions for Life Science



## [KO Validated] Hexokinase II Rabbit mAb

Catalog No.: A20829

**KO** Validated

Recombinant

3 Publications

### Basic Information

#### Observed MW

102kD

#### Calculated MW

102kDa

#### Category

SMab Recombinant Monoclonal Antibody

#### Applications

WB,IF/ICC,ELISA

#### Cross-Reactivity

Human,Mouse,Rat

#### CloneNo number

ARC52060

### Background

Hexokinases phosphorylate glucose to produce glucose-6-phosphate, the first step in most glucose metabolism pathways. This gene encodes hexokinase 2, the predominant form found in skeletal muscle. It localizes to the outer membrane of mitochondria. Expression of this gene is insulin-responsive, and studies in rat suggest that it is involved in the increased rate of glycolysis seen in rapidly growing cancer cells.

### Recommended Dilutions

**WB** 1:500 - 1:2000

**IF/ICC** 1:50 - 1:200

### Immunogen Information

#### Gene ID

3099

#### Swiss Prot

P52789

#### Immunogen

Recombinant fusion protein containing a sequence corresponding to amino acids 1-120 of human Hexokinase II (NP\_000180.2).

#### Synonyms

HKII; HXK2; II

### Contact



[www.abclonal.com](http://www.abclonal.com)

### Product Information

#### Source

Rabbit

#### Isotype

IgG

#### Purification

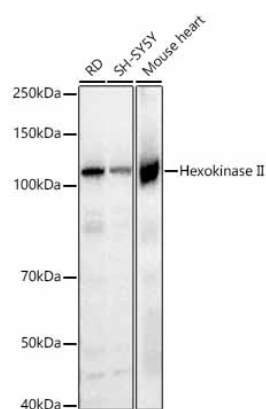
Affinity purification

#### Storage

Store at -20°C. Avoid freeze / thaw cycles.

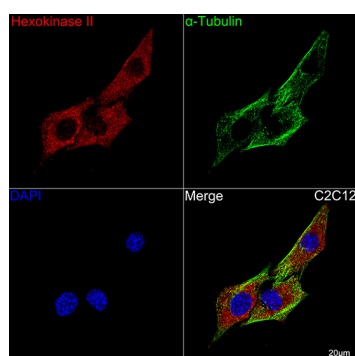
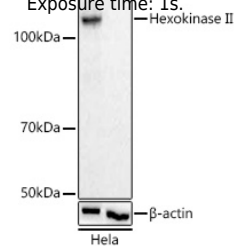
Buffer: PBS with 0.05% proclin300,0.05% BSA,50% glycerol,pH7.3.

## Validation Data



Western blot analysis of various lysates, using Hexokinase II Rabbit mAb (A20829) at 1:1000 dilution.  
 Secondary antibody: HRP Goat Anti-Rabbit IgG (H+L) (A5014) at 1:10000 dilution.  
 Lysates/proteins: 25µg per lane.  
 Blocking buffer: 3% nonfat dry milk in TBST.  
 Detection: ECL Basic Kit (RM00020).  
 Exposure time: 1s.

Western blot analysis of lysates from wild type(WT) and Hexokinase II knockout (KO) HeLa cells, using Hexokinase II Rabbit mAb (A20829) at 1:1000 dilution.  
 Secondary antibody: HRP Goat Anti-Rabbit IgG (H+L) (A5014) at 1:10000 dilution.  
 Lysates/proteins: 25µg per lane.  
 Blocking buffer: 3% nonfat dry milk in TBST.  
 Detection: ECL Basic Kit (RM00020).  
 Exposure time: 1s.



Confocal imaging of C2C12 cells using [KO Validated] Hexokinase II Rabbit mAb (A20829,dilution 1:50) followed by a further incubation with Cy3 Goat Anti-Rabbit IgG (H+L) (A5007, dilution 1:500) (Red). The cells were counterstained with α-Tubulin Mouse mAb (AC012, dilution 1:400) followed by incubation with ABflo® 488-conjugated Goat Anti-Mouse IgG (H+L) Ab (A5076, dilution 1:500) (Green). DAPI was used for nuclear staining (Blue). Objective: 100x.