

A20820

Leader in Biomolecular Solutions for Life Science



Symmetric DiMethyl-Histone H3-R8 Rabbit pAb

Catalog No.: A20820

Basic Information

Observed MW

17kDa

Calculated MW

15kDa

Category

Mouse Monoclonal Antibody

Applications

WB,ChIP,ELISA

Cross-Reactivity

Human,Mouse,Rat,Other (Wide Range Predicted)

Background

Histones are basic nuclear proteins that are responsible for the nucleosome structure of the chromosomal fiber in eukaryotes. This structure consists of approximately 146 bp of DNA wrapped around a nucleosome, an octamer composed of pairs of each of the four core histones (H2A, H2B, H3, and H4). The chromatin fiber is further compacted through the interaction of a linker histone, H1, with the DNA between the nucleosomes to form higher order chromatin structures. This gene is intronless and encodes a replication-dependent histone that is a member of the histone H3 family. Transcripts from this gene lack polyA tails; instead, they contain a palindromic termination element. This gene is found in the large histone gene cluster on chromosome 6p22-p21.3.

Recommended Dilutions

WB 1:100 - 1:500

ChIP 5µg antibody for
5µg-10µg of Chromatin

Immunogen Information

Gene ID

8290/8350

Swiss Prot

Q16695/P68431

Immunogen

A synthetic symmetric dimethylated peptide around R8 of human histone H3 (NP_003520.1).

Synonyms

H3/A; H3C2; H3C3; H3C4; H3C6; H3C7; H3C8; H3FA; H3C10; H3C11; H3C12; HIST1H3A; Symmetric DiMethyl-Histone H3-R8

Contact



www.abclonal.com

Product Information

Source

Rabbit

Isotype

IgG

Purification

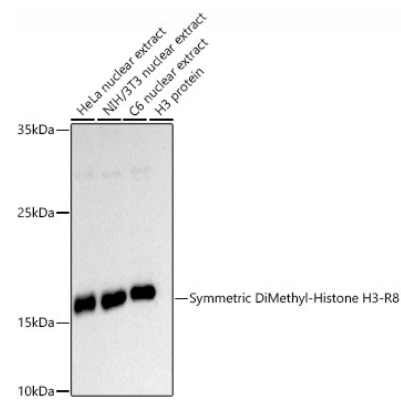
Affinity purification

Storage

Store at -20°C. Avoid freeze / thaw cycles.

Buffer: PBS with 0.05% proclin300,50% glycerol,pH7.3.

Validation Data



Western blot analysis of various lysates using Symmetric DiMethyl-Histone H3-R8 Rabbit pAb (A20820) at 1:500 dilution. Secondary antibody: HRP Goat Anti-Rabbit IgG (H+L) (AS014) at 1:10000 dilution. Lysates/proteins: 25µg per lane. Blocking buffer: 3% nonfat dry milk in TBST. Detection: ECL Basic Kit (RM00020). Exposure time: 90s.

Chromatin Immunoprecipitation analysis of extracts of HeLa cells, using Symmetric DiMethyl-Histone H3-R8 antibody (A20820) and rabbit IgG. The amount of immunoprecipitated DNA was checked by quantitative PCR. Histogram was constructed by the ratios of the immunoprecipitated DNA to the input.