

A2081

Leader in Biomolecular Solutions for Life Science



GSK3 β Rabbit pAb

Catalog No.: A2081

28 Publications

Basic Information

Observed MW

46kDa

Calculated MW

47kDa

Category

Polyclonal Antibody

Applications

WB, IHC-P, IF/ICC, IP, ELISA

Cross-Reactivity

Human, Mouse, Rat

Background

The protein encoded by this gene is a serine-threonine kinase belonging to the glycogen synthase kinase subfamily. It is a negative regulator of glucose homeostasis and is involved in energy metabolism, inflammation, ER-stress, mitochondrial dysfunction, and apoptotic pathways. Defects in this gene have been associated with Parkinson disease and Alzheimer disease.

Recommended Dilutions

WB	1:500 - 1:2000
IHC-P	1:50 - 1:200
IF/ICC	1:50 - 1:200
IP	0.5 μ g-4 μ g antibody for 200 μ g-400 μ g extracts of whole cells

Immunogen Information

Gene ID

2932

Swiss Prot

P49841

Immunogen

A synthetic peptide corresponding to a sequence within amino acids 350-420 of human GSK3 β (NP_001139628.1).

Synonyms

GSK3B; gsk-3 β ; GSK3 β

Contact



www.abclonal.com

Product Information

Source

Rabbit

Isotype

IgG

Purification

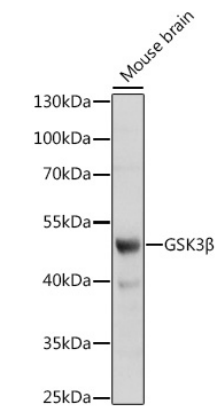
Affinity purification

Storage

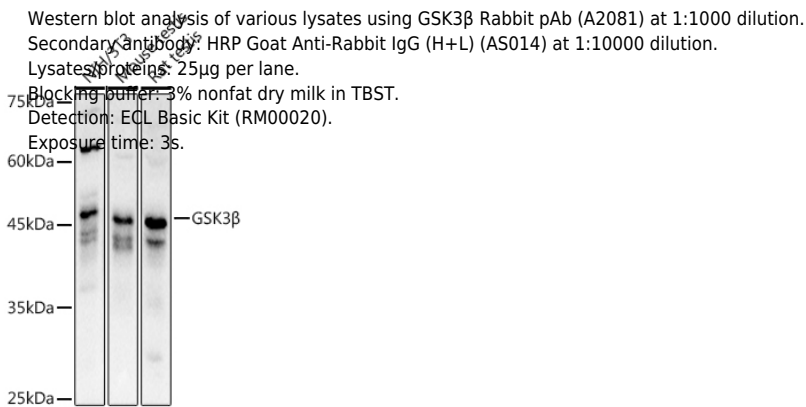
Store at -20°C. Avoid freeze / thaw cycles.

Buffer: PBS with 0.09% Sodium azide, 50% glycerol, pH7.3.

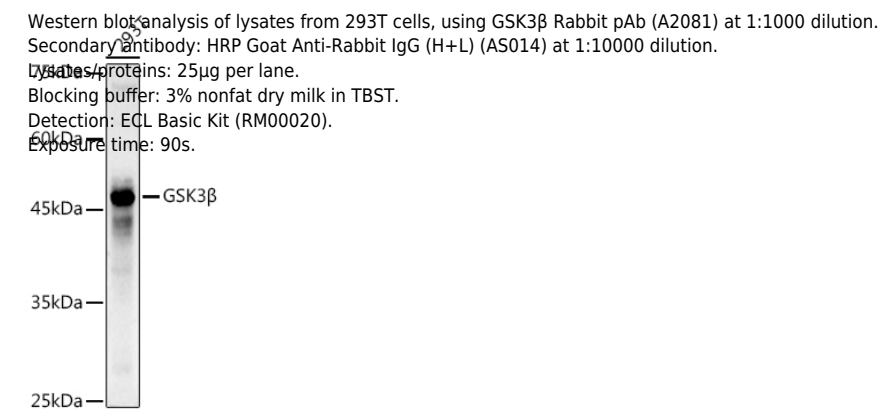
Validation Data



Western blot analysis of lysates from mouse brain, using GSK3β Rabbit pAb (A2081) at 1:1000 dilution.
Secondary antibody: HRP Goat Anti-Rabbit IgG (H+L) (A5014) at 1:10000 dilution.
Lysates/proteins: 25μg per lane.
Blocking buffer: 3% nonfat dry milk in TBST.
Detection: ECL Basic Kit (RM00020).
Exposure time: 90s.

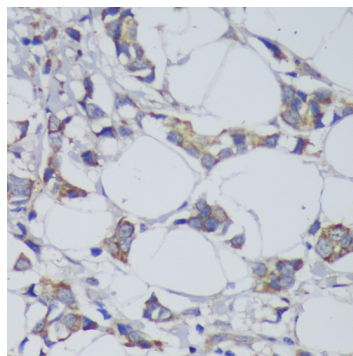


Western blot analysis of various lysates using GSK3β Rabbit pAb (A2081) at 1:1000 dilution.
Secondary antibody: HRP Goat Anti-Rabbit IgG (H+L) (A5014) at 1:10000 dilution.
Lysates/proteins: 25μg per lane.
Blocking buffer: 3% nonfat dry milk in TBST.
Detection: ECL Basic Kit (RM00020).
Exposure time: 3s.

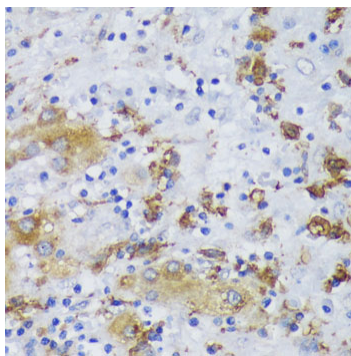


Western blot analysis of lysates from 293T cells, using GSK3β Rabbit pAb (A2081) at 1:1000 dilution.
Secondary antibody: HRP Goat Anti-Rabbit IgG (H+L) (A5014) at 1:10000 dilution.
Lysates/proteins: 25μg per lane.
Blocking buffer: 3% nonfat dry milk in TBST.
Detection: ECL Basic Kit (RM00020).
Exposure time: 90s.

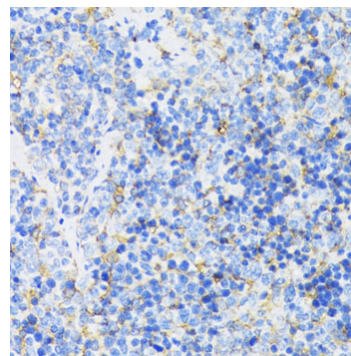
Validation Data



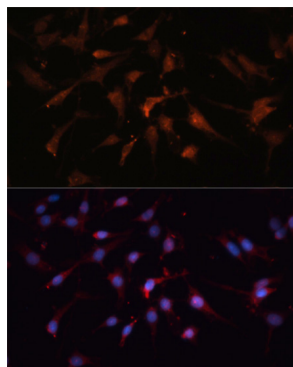
Immunohistochemistry analysis of GSK3 β in paraffin-embedded human mammary cancer using GSK3 β Rabbit pAb (A2081) at dilution of 1:200 (40x lens). Perform microwave antigen retrieval with 10 mM PBS buffer pH 7.2 before commencing with IHC staining protocol.



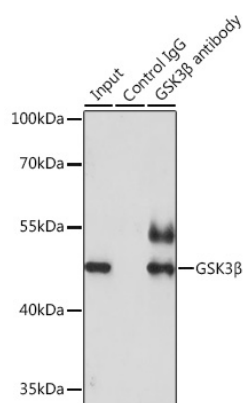
Immunohistochemistry analysis of GSK3 β in paraffin-embedded human liver cancer using GSK3 β Rabbit pAb (A2081) at dilution of 1:200 (40x lens). Perform microwave antigen retrieval with 10 mM PBS buffer pH 7.2 before commencing with IHC staining protocol.



Immunohistochemistry analysis of GSK3 β in paraffin-embedded mouse spleen using GSK3 β Rabbit pAb (A2081) at dilution of 1:200 (40x lens). Perform microwave antigen retrieval with 10 mM PBS buffer pH 7.2 before commencing with IHC staining protocol.



Immunofluorescence analysis of C6 cells using GSK3 β Rabbit pAb (A2081) at dilution of 1:100. Blue: DAPI for nuclear staining.



Immunoprecipitation analysis of 200 μ g extracts of HeLa cells using 3 μ g GSK3 β antibody (A2081). Western blot was performed from the immunoprecipitate using GSK3 β antibody (A2081) at a dilution of 1:1000.