

A20798

Leader in Biomolecular Solutions for Life Science



E-Cadherin Rabbit mAb

Catalog No.: A20798

Recombinant

45 Publications

Basic Information

Observed MW

135kDa

Calculated MW

97kDa

Category

SMab Recombinant Monoclonal Antibody

Applications

WB, IHC-P, IF/ICC, ELISA

Cross-Reactivity

Human, Rat

CloneNo number

ARC51012

Background

This gene encodes a classical cadherin of the cadherin superfamily. Alternative splicing results in multiple transcript variants, at least one of which encodes a preproprotein that is proteolytically processed to generate the mature glycoprotein. This calcium-dependent cell-cell adhesion protein is comprised of five extracellular cadherin repeats, a transmembrane region and a highly conserved cytoplasmic tail. Mutations in this gene are correlated with gastric, breast, colorectal, thyroid and ovarian cancer. Loss of function of this gene is thought to contribute to cancer progression by increasing proliferation, invasion, and/or metastasis. The ectodomain of this protein mediates bacterial adhesion to mammalian cells and the cytoplasmic domain is required for internalization. This gene is present in a gene cluster with other members of the cadherin family on chromosome 16.

Recommended Dilutions

WB	1:500 - 1:1000
IHC-P	1:50 - 1:200
IF/ICC	1:50 - 1:200

Immunogen Information

Gene ID

999

Swiss Prot

P12830

Immunogen

A synthetic peptide corresponding to a sequence within amino acids 700-800 of human E-Cadherin (NP_004351.1).

Synonyms

UVO; CDHE; ECAD; LCAM; Arc-1; BCDS1; CD324; E-Cadherin

Contact



www.abclonal.com

Product Information

Source

Rabbit

Isotype

IgG

Purification

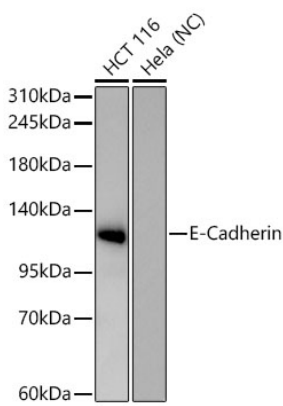
Affinity purification

Storage

Store at -20°C. Avoid freeze / thaw cycles.

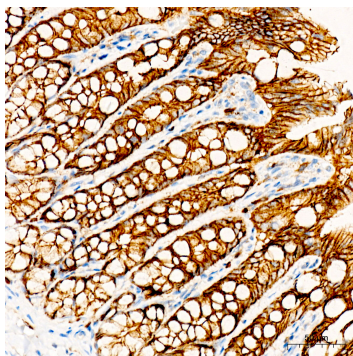
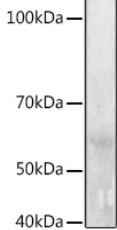
Buffer: PBS with 0.05% proclin300, 0.05% BSA, 50% glycerol, pH7.3.

Validation Data

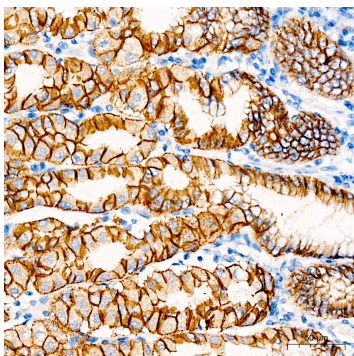


Western blot analysis of various lysates, using E-Cadherin Rabbit mAb (A20798) at1:1000 dilution.
Secondary antibody: HRP Goat Anti-Rabbit IgG (H+L) (A5014) at1:10000 dilution.
Lysates/proteins: 25µg per lane.
Blocking buffer: 3% nonfat dry milk in TBST.
Detection: ECL Basic Kit (RM00020).
Negative control (NC): HeLa
Exposure time: 30s.

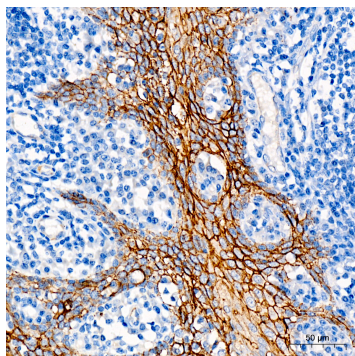
Western blot analysis of lysates from Rat kidney, using E-Cadherin Rabbit mAb (A20798) at1:1000 dilution.
Secondary antibody: HRP Goat Anti-Rabbit IgG (H+L) (A5014) at1:10000 dilution.
Lysates/proteins: 25µg per lane.
Blocking buffer: 3% nonfat dry milk in TBST.
Detection: ECL Enhanced Kit (RM00021).
Exposure time: 180s.



Immunohistochemistry analysis of E-Cadherin in paraffin-embedded rat colon tissue using E-Cadherin Rabbit mAb (A20798) at a dilution of 1:200 (40x lens). High pressure antigen retrieval was performed with 0.01 M citrate buffer (pH 6.0) prior to IHC staining.



Immunohistochemistry analysis of E-Cadherin in paraffin-embedded human stomach tissue using E-Cadherin Rabbit mAb (A20798) at a dilution of 1:200 (40x lens). High pressure antigen retrieval was performed with 0.01 M citrate buffer (pH 6.0) prior to IHC staining.

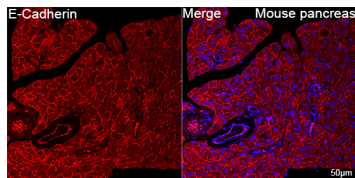


Immunohistochemistry analysis of E-Cadherin in paraffin-embedded human tonsil tissue using E-Cadherin Rabbit mAb (A20798) at a dilution of 1:200 (40x lens). High pressure antigen retrieval was performed with 0.01 M citrate buffer (pH 6.0) prior to IHC staining.

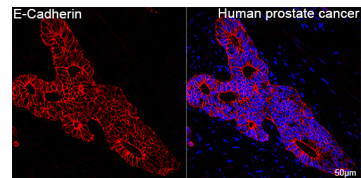
Validation Data



Immunohistochemistry analysis of E-Cadherin in paraffin-embedded mouse Intestine tissue using E-Cadherin Rabbit mAb (A20798) at a dilution of 1:200 (40x lens). High pressure antigen retrieval was performed with 0.01 M citrate buffer (pH 6.0) prior to IHC staining.



Confocal imaging of paraffin-embedded Mouse pancreas using E-Cadherin Rabbit mAb (A20798, dilution 1:100) followed by a further incubation with Cy3 Goat Anti-Rabbit IgG (H+L) (AS007, dilution 1:500) (Red). DAPI was used for nuclear staining (Blue). Objective: 40x. Perform high pressure antigen retrieval with 0.01 M citrate buffer (pH 6.0) prior to IF staining.



Confocal imaging of paraffin-embedded Human prostate cancer using E-Cadherin Rabbit mAb (A20798, dilution 1:100) followed by a further incubation with Cy3 Goat Anti-Rabbit IgG (H+L) (AS007, dilution 1:500) (Red). DAPI was used for nuclear staining (Blue). Objective: 40x. Perform high pressure antigen retrieval with 0.01 M citrate buffer (pH 6.0) prior to IF staining.