

A20768

Leader in Biomolecular Solutions for Life Science



SPARCL1 Rabbit pAb

Catalog No.: A20768

Basic Information

Observed MW

140kDa

Calculated MW

75kDa

Category

Polyclonal Antibody

Applications

WB, ELISA

Cross-Reactivity

Human, Mouse, Rat

Background

Predicted to enable calcium ion binding activity; collagen binding activity; and extracellular matrix binding activity. Predicted to be involved in anatomical structure development and regulation of synapse organization. Located in extracellular space.

Recommended Dilutions

WB 1:500 - 1:1000

Immunogen Information

Gene ID

8404

Swiss Prot

Q14515

Immunogen

Recombinant fusion protein containing a sequence corresponding to amino acids 17-300 of human SPARCL1 (NP_004675.3).

Synonyms

SC1; MAST9; PIG33; MAST 9; SPARCL1

Contact



www.abclonal.com

Product Information

Source

Rabbit

Isotype

IgG

Purification

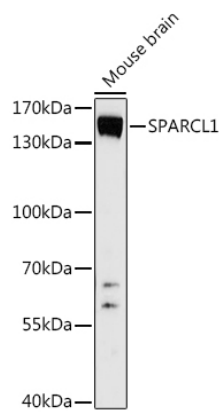
Affinity purification

Storage

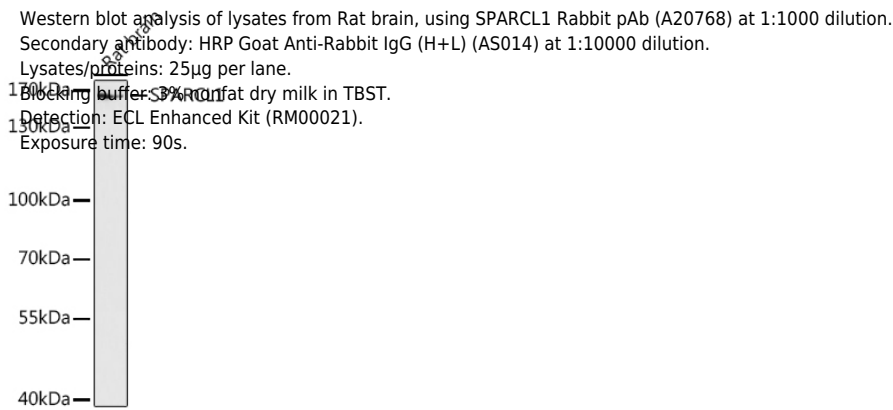
Store at -20°C. Avoid freeze / thaw cycles.

Buffer: PBS with 0.01% thimerosal, 50% glycerol, pH 7.3.

Validation Data



Western blot analysis of lysates from Mouse brain, using SPARCL1 Rabbit pAb (A20768) at 1:1000 dilution.
Secondary antibody: HRP Goat Anti-Rabbit IgG (H+L) (AS014) at 1:10000 dilution.
Lysates/proteins: 25µg per lane.
Blocking buffer: 3% nonfat dry milk in TBST.
Detection: ECL Basic Kit (RM00020).
Exposure time: 90s.



Western blot analysis of lysates from Rat brain, using SPARCL1 Rabbit pAb (A20768) at 1:1000 dilution.
Secondary antibody: HRP Goat Anti-Rabbit IgG (H+L) (AS014) at 1:10000 dilution.
Lysates/proteins: 25µg per lane.
Blocking buffer: 3% nonfat dry milk in TBST.
Detection: ECL Enhanced Kit (RM00021).
Exposure time: 90s.