

# USP9X/USP9Y Rabbit pAb

Catalog No.: A20758

## Basic Information

### Observed MW

291kDa

### Calculated MW

291kDa

### Category

Primary antibody

### Applications

ELISA, WB, IHC-P, IF/ICC

### Cross-Reactivity

Human, Mouse, Rat

## Background

This gene is a member of the peptidase C19 family. It encodes a protein that is similar to ubiquitin-specific proteases, which cleave the ubiquitin moiety from ubiquitin-fused precursors and ubiquitinated proteins.

## Recommended Dilutions

<b>WB</b>	1:100 - 1:500
<b>IHC-P</b>	1:50 - 1:200
<b>IF/ICC</b>	1:50 - 1:200

## Immunogen Information

### Gene ID

8287

### Swiss Prot

O00507

### Immunogen

A synthetic peptide corresponding to a sequence within amino acids 2456-2555 of human USP9X/USP9Y (NP\_004645.2).

### Synonyms

DFFRY; SPGFY2; USP9X/USP9Y

## Contact

 | [www.abclonal.com](http://www.abclonal.com)

## Product Information

### Source

Rabbit

### Isotype

IgG

### Purification

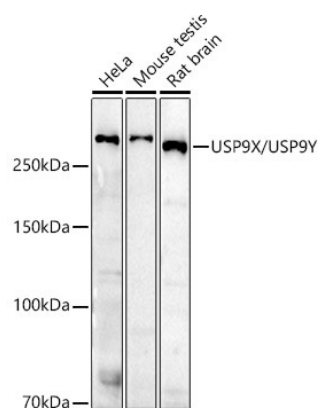
Affinity purification

### Storage

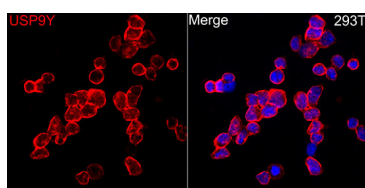
Store at -20°C. Avoid freeze / thaw cycles.

Buffer: PBS with 0.05% proclin300, 50% glycerol, pH7.3.

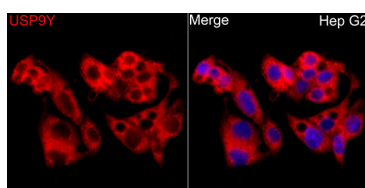
## Validation Data



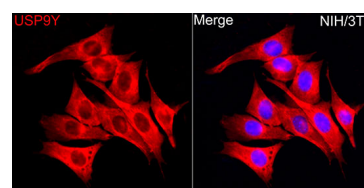
Western blot analysis of various lysates using USP9X/USP9Y Rabbit pAb (A20758) at 1:500 dilution. Secondary antibody: HRP Goat Anti-Rabbit IgG (H+L) (AS014) at 1:10000 dilution. Lysates / proteins: 25 µg per lane. Blocking buffer: 3 % nonfat dry milk in TBST. Detection: ECL Enhanced Kit (RM00021). Exposure time: 180s.



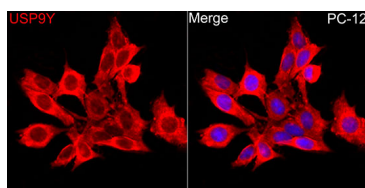
Immunofluorescence analysis of 293T cells using USP9X/USP9Y Rabbit pAb (A20758) at dilution of 1:100 (40x lens). Secondary antibody: Cy3 Goat Anti-Rabbit IgG (H+L) (AS007) at 1:500 dilution. Blue: DAPI for nuclear staining.



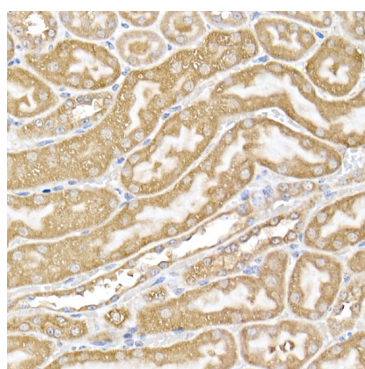
Immunofluorescence analysis of HepG2 cells using USP9X/USP9Y Rabbit pAb (A20758) at dilution of 1:100 (40x lens). Secondary antibody: Cy3 Goat Anti-Rabbit IgG (H+L) (AS007) at 1:500 dilution. Blue: DAPI for nuclear staining.



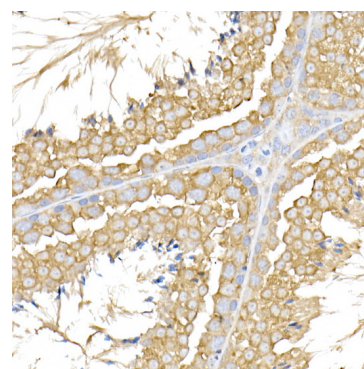
Immunofluorescence analysis of NIH/3T3 cells using USP9X/USP9Y Rabbit pAb (A20758) at dilution of 1:100 (40x lens). Secondary antibody: Cy3 Goat Anti-Rabbit IgG (H+L) (AS007) at 1:500 dilution. Blue: DAPI for nuclear staining.



Immunofluorescence analysis of PC-12 cells using USP9X/USP9Y Rabbit pAb (A20758) at dilution of 1:100 (40x lens). Secondary antibody: Cy3 Goat Anti-Rabbit IgG (H+L) (AS007) at 1:500 dilution. Blue: DAPI for nuclear staining.



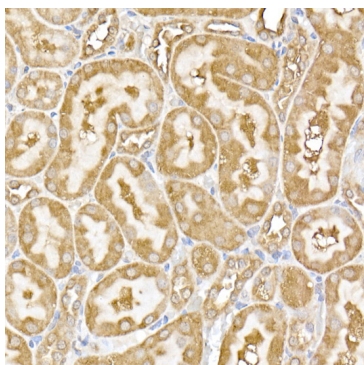
Immunohistochemistry analysis of USP9X/USP9Y in paraffin-embedded mouse kidney tissue using USP9X/USP9Y Rabbit pAb (A20758) at a dilution of 1:100 (40x lens). High pressure antigen retrieval was performed with 0.01 M citrate buffer (pH 6.0) prior to IHC staining.



Immunohistochemistry analysis of USP9X/USP9Y in paraffin-embedded mouse testis tissue using USP9X/USP9Y Rabbit pAb (A20758) at a dilution of 1:100 (40x lens). High pressure antigen retrieval was performed with 0.01 M citrate buffer (pH 6.0) prior to IHC staining.

## Validation Data

---



Immunohistochemistry analysis of USP9X/USP9Y in paraffin-embedded rat kidney tissue using USP9X/USP9Y Rabbit pAb (A20758) at a dilution of 1:100 (40x lens). High pressure antigen retrieval was performed with 0.01 M citrate buffer (pH 6.0) prior to IHC staining.