

A2062

Leader in Biomolecular Solutions for Life Science



IKK α Rabbit pAb

Catalog No.: A2062

17 Publications

Basic Information

Observed MW

85kDa

Calculated MW

85kDa

Category

Polyclonal Antibody

Applications

WB,IHC-P,IF/ICC,IP,ELISA

Cross-Reactivity

Human,Mouse,Rat

Background

This gene encodes a member of the serine/threonine protein kinase family. The encoded protein, a component of a cytokine-activated protein complex that is an inhibitor of the essential transcription factor NF-kappa-B complex, phosphorylates sites that trigger the degradation of the inhibitor via the ubiquination pathway, thereby activating the transcription factor.

Recommended Dilutions

WB	1:1000 - 1:5000
IHC-P	1:50 - 1:200
IF/ICC	1:50 - 1:200
IP	0.5 μ g-4 μ g antibody for 200 μ g-400 μ g extracts of whole cells

Immunogen Information

Gene ID

1147

Swiss Prot

O15111

Immunogen

A synthetic peptide corresponding to a sequence within amino acids 600-700 of human IKK α (NP_001269.3).

Synonyms

BPS2; IKK1; IKKA; IKBKA; TCF16; NFKBIKA; IKK-alpha; IKK α

Contact



www.abclonal.com

Product Information

Source

Rabbit

Isotype

IgG

Purification

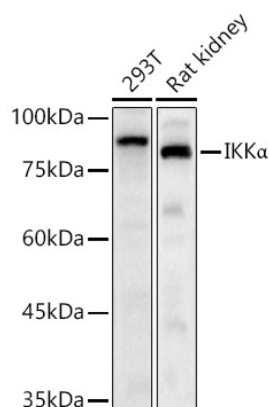
Affinity purification

Storage

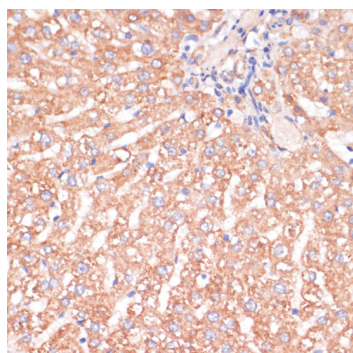
Store at -20°C. Avoid freeze / thaw cycles.

Buffer: PBS with 0.05% proclin300,50% glycerol,pH7.3.

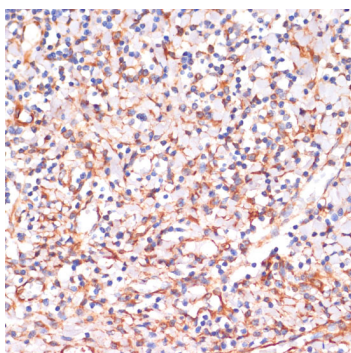
Validation Data



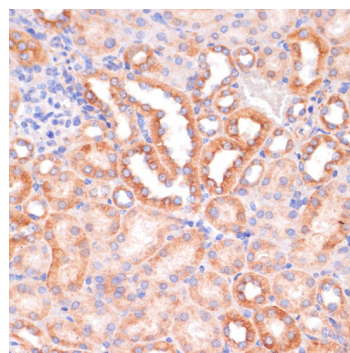
Western blot analysis of various lysates, using IKKα Rabbit pAb (A2062) at 1:2000 dilution.
 Secondary antibody: HRP Goat Anti-Rabbit IgG (H+L) (AS014) at 1:10000 dilution.
 Lysates/proteins: 25μg per lane.
 Blocking buffer: 3% nonfat dry milk in TBST.
 Detection: ECL Basic Kit (RM00020).
 Exposure time: 1s.



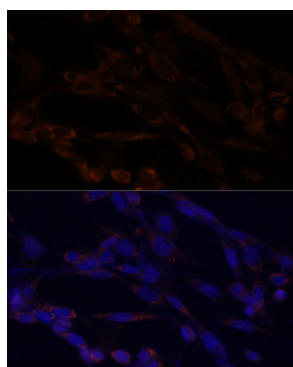
Immunohistochemistry analysis of IKKα in paraffin-embedded rat liver using IKKα Rabbit pAb (A2062) at dilution of 1:100 (40x lens). Perform microwave antigen retrieval with 10 mM PBS buffer pH 7.2 before commencing with IHC staining protocol.



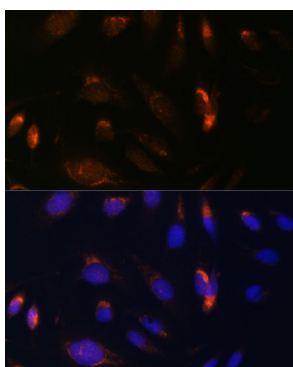
Immunohistochemistry analysis of IKKα in paraffin-embedded human tonsil using IKKα Rabbit pAb (A2062) at dilution of 1:100 (40x lens). Perform microwave antigen retrieval with 10 mM PBS buffer pH 7.2 before commencing with IHC staining protocol.



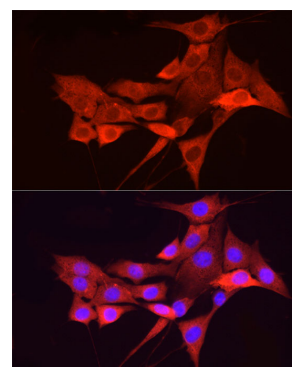
Immunohistochemistry analysis of IKKα in paraffin-embedded mouse kidney using IKKα Rabbit pAb (A2062) at dilution of 1:100 (40x lens). Perform microwave antigen retrieval with 10 mM PBS buffer pH 7.2 before commencing with IHC staining protocol.



Immunofluorescence analysis of NIH/3T3 cells using IKKα Rabbit pAb (A2062) at dilution of 1:100. Secondary antibody: Cy3 Goat Anti-Rabbit IgG (H+L) (AS007) at 1:500 dilution. Blue: DAPI for nuclear staining.

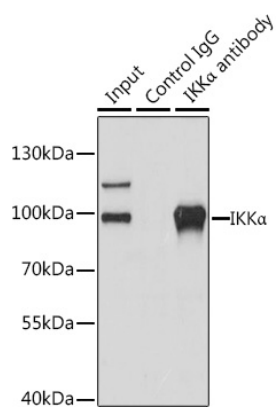


Immunofluorescence analysis of U-2 OS cells using IKKα Rabbit pAb (A2062) at dilution of 1:100. Secondary antibody: Cy3 Goat Anti-Rabbit IgG (H+L) (AS007) at 1:500 dilution. Blue: DAPI for nuclear staining.



Immunofluorescence analysis of NIH/3T3 cells using IKKα Rabbit pAb (A2062) at dilution of 1:200 (40x lens). Secondary antibody: Cy3 Goat Anti-Rabbit IgG (H+L) (AS007) at 1:500 dilution. Blue: DAPI for nuclear staining.

Validation Data



Immunoprecipitation analysis of 200 µg extracts of 293T cells using 3 µg IKKα antibody (A2062). Western blot was performed from the immunoprecipitate using IKKα antibody (A2062) at a dilution of 1:1000.