

A20564

Leader in Biomolecular Solutions for Life Science



## CUEDC1 Rabbit pAb

Catalog No.: A20564

### Basic Information

**Observed MW**

42kDa

**Calculated MW**

42kDa

**Category**

Polyclonal Antibody

**Applications**

WB, ELISA

**Cross-Reactivity**

Human, Rat

### Background

Predicted to enable ubiquitin binding activity.

### Recommended Dilutions

**WB** 1:500 - 1:1000

### Immunogen Information

**Gene ID**

404093

**Swiss Prot**

Q9NWM3

**Immunogen**

Recombinant fusion protein containing a sequence corresponding to amino acids 187-386 of human CUEDC1 (NP\_001258804.1).

**Synonyms**

### Contact



[www.abclonal.com](http://www.abclonal.com)

### Product Information

**Source**

Rabbit

**Isotype**

IgG

**Purification**

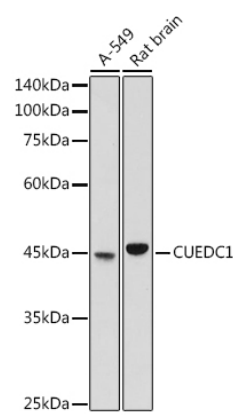
Affinity purification

**Storage**

Store at -20°C. Avoid freeze / thaw cycles.

Buffer: PBS with 0.05% proclin300, 50% glycerol, pH7.3.

# Validation Data



Western blot analysis of extracts of various cell lines, using CUEDC1 antibody (A20564) at 1:1000 dilution.  
Secondary antibody: HRP Goat Anti-Rabbit IgG (H+L) (A5014) at 1:10000 dilution.  
Lysates/proteins: 25µg per lane.  
Blocking buffer: 3% nonfat dry milk in TBST.  
Detection: ECL Basic Kit (RM00020).  
Exposure time: 180s.