

A20556

Leader in Biomolecular Solutions for Life Science



## SARM1 Rabbit pAb

Catalog No.: A20556

### Basic Information

**Observed MW**

73kDa

**Calculated MW**

79kDa

**Category**

Polyclonal Antibody

**Applications**

WB,IP,ELISA

**Cross-Reactivity**

Human

### Background

Enables NAD<sup>+</sup> nucleotidase, cyclic ADP-ribose generating and identical protein binding activity. Involved in NAD catabolic process; positive regulation of neuron death; and response to axon injury. Located in mitochondrion.

### Recommended Dilutions

**WB** 1:500 - 1:1000

**IP** 0.5µg-4µg antibody for  
200µg-400µg extracts of  
whole cells

### Immunogen Information

**Gene ID**

23098

**Swiss Prot**

Q6SZW1

**Immunogen**

A synthetic peptide corresponding to a sequence within amino acids 625-724 of human SARM1 (NP\_055892.2).

**Synonyms**

SARM; HsTIR; SAMD2; hSARM1; MyD88-5; SARM1

### Contact



[www.abclonal.com](http://www.abclonal.com)

### Product Information

**Source**

Rabbit

**Isotype**

IgG

**Purification**

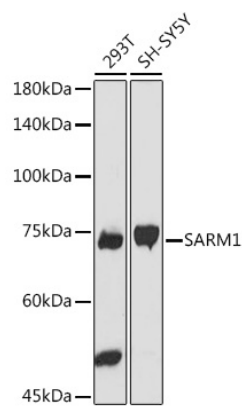
Affinity purification

**Storage**

Store at -20°C. Avoid freeze / thaw cycles.

Buffer: PBS with 0.05% proclin300,50% glycerol,pH7.3.

Validation Data



Western blot analysis of various lysates using SARM1 Rabbit pAb (A20556) at 1:1000 dilution.  
Secondary antibody: HRP Goat Anti-Rabbit IgG (H+L) (A5014) at 1:10000 dilution.  
Lysates/proteins: 25µg per lane.  
Blocking buffer: 3% nonfat dry milk in TBST.  
Detection: ECL Basic Kit (RM00020).  
Exposure time: 90s.

Immunoprecipitation analysis of 300 µg extracts of SH-SY5Y cells using 3 µg SARM1 antibody (A20556).  
Western blot was performed from the immunoprecipitate using SARM1 antibody (A20556) at a dilution of 1:1000.

