

A20524

Leader in Biomolecular Solutions for Life Science



# TARBP1 Rabbit pAb

Catalog No.: A20524

## Basic Information

### Observed MW

182kDa

### Calculated MW

182kDa

### Category

Polyclonal Antibody

### Applications

WB, ELISA

### Cross-Reactivity

Human

## Background

HIV-1, the causative agent of acquired immunodeficiency syndrome (AIDS), contains an RNA genome that produces a chromosomally integrated DNA during the replicative cycle. Activation of HIV-1 gene expression by the transactivator Tat is dependent on an RNA regulatory element (TAR) located downstream of the transcription initiation site. This element forms a stable stem-loop structure and can be bound by either the protein encoded by this gene or by RNA polymerase II. This protein may act to disengage RNA polymerase II from TAR during transcriptional elongation. Alternatively spliced transcripts of this gene may exist, but their full-length natures have not been determined.

## Recommended Dilutions

WB 1:500 - 1:1000

## Immunogen Information

### Gene ID

6894

### Swiss Prot

Q13395

### Immunogen

Recombinant fusion protein containing a sequence corresponding to amino acids 1322-1621 of human TARBP1 (NP\_005637.3).

### Synonyms

TRM3; TRMT3; TRP185; TRP-185; TARBP1

## Contact



[www.abclonal.com](http://www.abclonal.com)

## Product Information

### Source

Rabbit

### Isotype

IgG

### Purification

Affinity purification

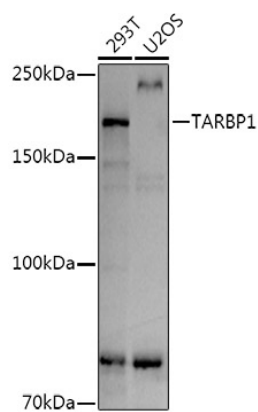
### Storage

Store at -20°C. Avoid freeze / thaw cycles.

Buffer: PBS with 0.05% proclin300, 50% glycerol, pH7.3.

## Validation Data

---



Western blot analysis of extracts of various cell lines, using TARBP1 antibody (A20524) at 1:1000 dilution.  
Secondary antibody: HRP Goat Anti-Rabbit IgG (H+L) (A5014) at 1:10000 dilution.  
Lysates/proteins: 25µg per lane.  
Blocking buffer: 3% nonfat dry milk in TBST.  
Detection: ECL Basic Kit (RM00020).  
Exposure time: 10s.