

A20486

Leader in Biomolecular Solutions for Life Science



## TASL Rabbit pAb

Catalog No.: A20486

1 Publications

### Basic Information

#### Observed MW

35kDa

#### Calculated MW

34kDa

#### Category

Polyclonal Antibody

#### Applications

WB, IHC-P, ELISA

#### Cross-Reactivity

Human, Mouse

### Background

Involved in positive regulation of innate immune response; positive regulation of toll-like receptor signaling pathway; and regulation of lysosomal lumen pH. Located in endolysosome membrane.

### Recommended Dilutions

WB	1:500 - 1:1000
IHC-P	1:50 - 1:200

### Immunogen Information

#### Gene ID

80231

#### Swiss Prot

Q9HAI6

#### Immunogen

Recombinant fusion protein containing a sequence corresponding to amino acids 96-196 of human TASL (NP\_079435.1).

#### Synonyms

CXorf21; TASL

### Contact



[www.abclonal.com](http://www.abclonal.com)

### Product Information

#### Source

Rabbit

#### Isotype

IgG

#### Purification

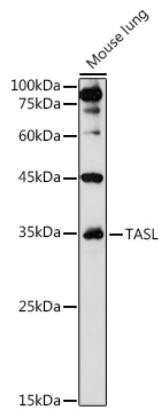
Affinity purification

#### Storage

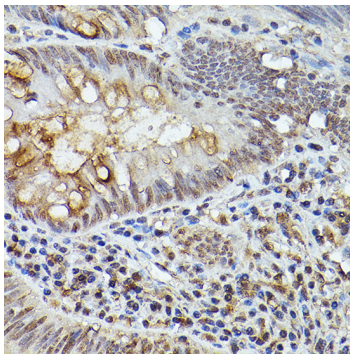
Store at -20°C. Avoid freeze / thaw cycles.

Buffer: PBS with 0.05% proclin300, 50% glycerol, pH7.3.

## Validation Data



Western blot analysis of lysates from Mouse lung, using TASL Rabbit pAb (A20486) at 1:1000 dilution.  
Secondary antibody: HRP Goat Anti-Rabbit IgG (H+L) (A5014) at 1:10000 dilution.  
Lysates/proteins: 25µg per lane.  
Blocking buffer: 3% nonfat dry milk in TBST.  
Detection: ECL Basic Kit (RM00020).  
Exposure time: 90s.



Immunohistochemistry analysis of TASL in paraffin-embedded human colon carcinoma using TASL Rabbit pAb (A20486) at dilution of 1:50 (40x lens). Perform high pressure antigen retrieval with 10 mM citrate buffer pH 6.0 before commencing with IHC staining protocol.