

CD31/PECAM1 Rabbit pAb

Catalog No.: A20478

Basic Information

Observed MW

130kDa

Calculated MW

76kDa

Category

Primary antibody

Applications

ELISA, WB

Cross-Reactivity

Mouse, Rat

Background

Enables protein phosphatase binding activity. Involved in several processes, including cellular response to interferon-gamma; negative regulation of GTPase activity; and negative regulation of actin filament polymerization. Located in cell surface and ruffle. Used to study pulmonary hypertension. Biomarker of bacterial pneumonia; orchitis; and osteoarthritis. Human ortholog(s) of this gene implicated in coronary artery disease (multiple); lung non-small cell carcinoma; neuroblastoma; and psoriatic arthritis. Orthologous to human PECAM1 (platelet and endothelial cell adhesion molecule 1).

Recommended Dilutions

WB 1:500 - 1:1000

Immunogen Information

Gene ID

29583

Swiss Prot

Q3SWT0

Immunogen

Recombinant fusion protein containing a sequence corresponding to amino acids 611-678 of rat CD31/PECAM1 (NP_113779.1).

Synonyms

CD31; Pecam; CD31/PECAM1

Contact

 | www.abclonal.com

Product Information

Source

Rabbit

Isotype

IgG

Purification

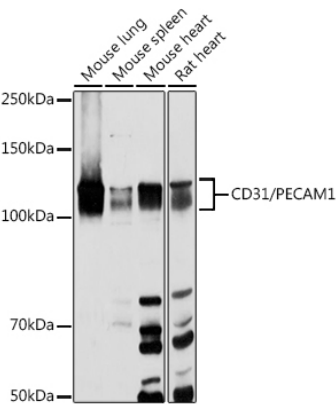
Affinity purification

Storage

Store at -20°C. Avoid freeze / thaw cycles.

Buffer: PBS with 0.05% proclin300, 50% glycerol, pH7.3.

Validation Data



Western blot analysis of extracts of various cell lines, using CD31/PECAM1 antibody (A20478) at 1:1000 dilution.
Secondary antibody: HRP Goat Anti-Rabbit IgG (H+L) (A5014) at 1:10000 dilution.
Lysates/proteins: 25µg per lane.
Blocking buffer: 3% nonfat dry milk in TBST.
Detection: ECL Basic Kit (RM00020).
Exposure time: 10s.