

A20474

Leader in Biomolecular Solutions for Life Science



S100A8 Rabbit pAb

Catalog No.: A20474

Basic Information

Observed MW

11kDa

Calculated MW

10kDa

Category

Polyclonal Antibody

Applications

WB, IHC-P, ELISA

Cross-Reactivity

Mouse, Rat

Background

Predicted to enable calcium ion binding activity and calcium-dependent protein binding activity. Acts upstream of or within astrocyte development and positive regulation of peptide secretion. Predicted to be located in cytosol and intermediate filament cytoskeleton. Predicted to be active in extracellular space. Is expressed in several structures, including bone marrow; extraembryonic component; female reproductive system; and liver. Human ortholog(s) of this gene implicated in myocarditis. Orthologous to human S100A8 (S100 calcium binding protein A8).

Recommended Dilutions

WB	1:500 - 1:1000
IHC-P	1:50 - 1:200

Immunogen Information

Gene ID

20201

Swiss Prot

P27005

Immunogen

Recombinant fusion protein containing a sequence corresponding to amino acids 1-89 of mouse S100A8 (NP_038678.1).

Synonyms

p8; B8Ag; CFAg; Caga; MRP8; CP-10; 60B8Ag; S100A8

Contact



www.abclonal.com

Product Information

Source

Rabbit

Isotype

IgG

Purification

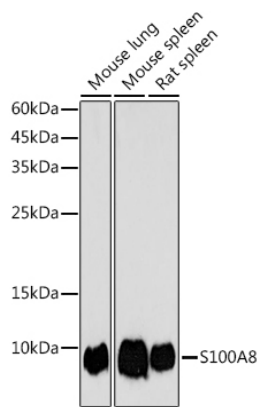
Affinity purification

Storage

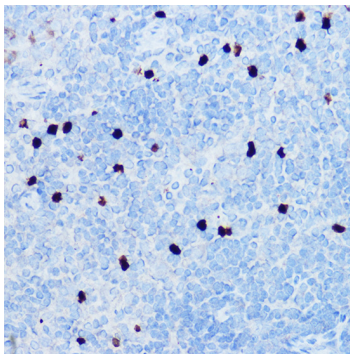
Store at -20°C. Avoid freeze / thaw cycles.

Buffer: PBS with 0.05% proclin300, 50% glycerol, pH7.3.

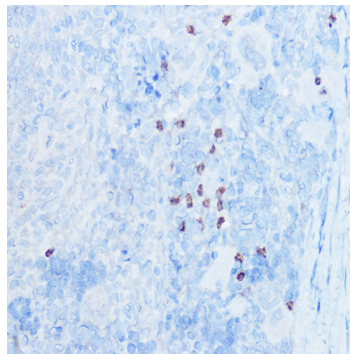
Validation Data



Western blot analysis of extracts of various cell lines, using S100A8 antibody (A20474) at 1:1000 dilution.
Secondary antibody: HRP Goat Anti-Rabbit IgG (H+L) (A5014) at 1:10000 dilution.
Lysates/proteins: 25µg per lane.
Blocking buffer: 3% nonfat dry milk in TBST.
Detection: ECL Basic Kit (RM00020).
Exposure time: 180s.



Immunohistochemistry analysis of paraffin-embedded mouse spleen using S100A8 Rabbit pAb (A20474) at dilution of 1:50 (40x lens). Perform high pressure antigen retrieval with 10 mM citrate buffer pH 6.0 before commencing with IHC staining protocol.



Immunohistochemistry analysis of paraffin-embedded rat spleen using S100A8 Rabbit pAb (A20474) at dilution of 1:50 (40x lens). Perform high pressure antigen retrieval with 10 mM citrate buffer pH 6.0 before commencing with IHC staining protocol.