

A20470

Leader in Biomolecular Solutions for Life Science



## CASP1 Rabbit pAb

Catalog No.: A20470

### Basic Information

#### Observed MW

48kDa

#### Calculated MW

46kDa

#### Category

Polyclonal Antibody

#### Applications

WB, ELISA

#### Cross-Reactivity

Mouse

### Background

Enables cysteine-type endopeptidase activity. Involved in several processes, including positive regulation of I-kappaB kinase/NF-kappaB signaling; positive regulation of interleukin-1 beta production; and protein autoprocessing. Acts upstream of or within several processes, including membrane hyperpolarization; mitochondrial depolarization; and positive regulation of interleukin-1 alpha production. Located in extracellular region. Part of IPAF inflammasome complex. Is expressed in knee joint and metanephros. Orthologous to human CASP1 (caspase 1).

### Recommended Dilutions

WB 1:500 - 1:1000

### Immunogen Information

#### Gene ID

12362

#### Swiss Prot

P29452

#### Immunogen

A synthetic peptide corresponding to a sequence within amino acids 200-300 of mouse CASP1 (NP\_033937.2).

#### Synonyms

ICE; IL1bc; CASP1

### Contact



[www.abclonal.com](http://www.abclonal.com)

### Product Information

#### Source

Rabbit

#### Isotype

IgG

#### Purification

Affinity purification

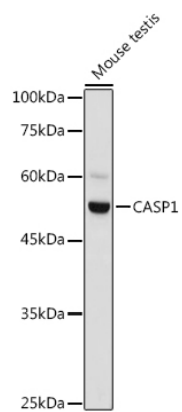
#### Storage

Store at -20°C. Avoid freeze / thaw cycles.

Buffer: PBS with 0.05% proclin300, 50% glycerol, pH7.3.

## Validation Data

---



Western blot analysis of extracts of Mouse testis, using CASP1 antibody (A20470) at 1:1000 dilution.  
Secondary antibody: HRP Goat Anti-Rabbit IgG (H+L) (A5014) at 1:10000 dilution.  
Lysates/proteins: 25µg per lane.  
Blocking buffer: 3% nonfat dry milk in TBST.  
Detection: ECL Basic Kit (RM00020).  
Exposure time: 1s.