

A20452

Leader in Biomolecular Solutions for Life Science



Rev-Erb α /NR1D1 Rabbit mAb

Catalog No.: A20452

Recombinant

3 Publications

Basic Information

Observed MW

75kDa

Calculated MW

67kDa

Category

SMab Recombinant Monoclonal Antibody

Applications

WB, ELISA

Cross-Reactivity

Human, Mouse, Rat

CloneNo number

ARC50483

Background

This gene encodes a transcription factor that is a member of the nuclear receptor subfamily 1. The encoded protein is a ligand-sensitive transcription factor that negatively regulates the expression of core clock proteins. In particular this protein represses the circadian clock transcription factor aryl hydrocarbon receptor nuclear translocator-like protein 1 (ARNTL). This protein may also be involved in regulating genes that function in metabolic, inflammatory and cardiovascular processes.

Recommended Dilutions

WB 1:500 - 1:1000

Immunogen Information

Gene ID

9572

Swiss Prot

P20393

Immunogen

Recombinant fusion protein containing a sequence corresponding to amino acids 280-360 of human Rev-Erb α /NR1D1 (NP_068370.1).

Synonyms

EAR1; hRev; THRA1; THRAL; ear-1; REVERBA; REVERBalpha; Rev-Erb α /NR1D1

Contact



www.abclonal.com

Product Information

Source

Rabbit

Isotype

IgG

Purification

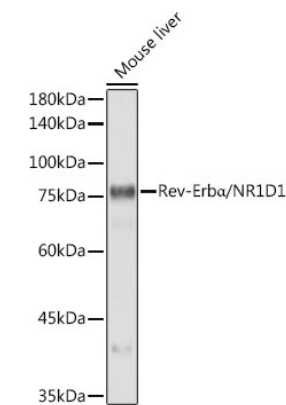
Affinity purification

Storage

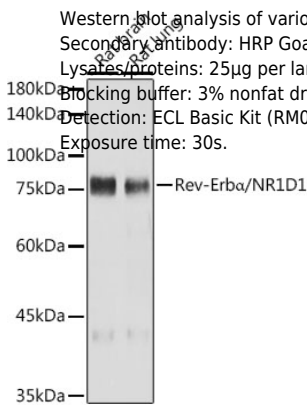
Store at -20°C. Avoid freeze / thaw cycles.

Buffer: PBS with 0.05% proclin300, 0.05% BSA, 50% glycerol, pH7.3.

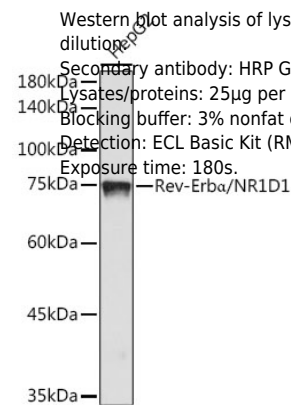
Validation Data



Western blot analysis of lysates from Mouse liver, using Rev-Erbα/NR1D1 Rabbit mAb (A20452) at1:1000 dilution.
Secondary antibody: HRP Goat Anti-Rabbit IgG (H+L) (AS014) at1:10000 dilution.
Lysates/proteins: 25µg per lane.
Blocking buffer: 3% nonfat dry milk in TBST.
Detection: ECL Basic Kit (RM00020).
Exposure time: 10s.



Western blot analysis of various lysates using Rev-Erbα/NR1D1 Rabbit mAb (A20452) at1:1000 dilution.
Secondary antibody: HRP Goat Anti-Rabbit IgG (H+L) (AS014) at1:10000 dilution.
Lysates/proteins: 25µg per lane.
Blocking buffer: 3% nonfat dry milk in TBST.
Detection: ECL Basic Kit (RM00020).
Exposure time: 30s.



Western blot analysis of lysates from HepG2 cells, using Rev-Erbα/NR1D1 Rabbit mAb (A20452) at1:1000 dilution.
Secondary antibody: HRP Goat Anti-Rabbit IgG (H+L) (AS014) at1:10000 dilution.
Lysates/proteins: 25µg per lane.
Blocking buffer: 3% nonfat dry milk in TBST.
Detection: ECL Basic Kit (RM00020).
Exposure time: 180s.