

A2043

Leader in Biomolecular Solutions for Life Science



# IL13RA2 Rabbit pAb

Catalog No.: A2043

## Basic Information

### Observed MW

50-65kDa

### Calculated MW

44kDa

### Category

Polyclonal Antibody

### Applications

WB, IHC-P, ELISA

### Cross-Reactivity

Human, Mouse, Rat

## Background

The protein encoded by this gene is closely related to IL13RA1, a subunit of the interleukin 13 receptor complex. This protein binds IL13 with high affinity, but lacks cytoplasmic domain, and does not appear to function as a signal mediator. It is reported to play a role in the internalization of IL13.

## Recommended Dilutions

WB	1:1000 - 1:5000
IHC-P	1:50 - 1:200

## Immunogen Information

### Gene ID

3598

### Swiss Prot

Q14627

### Immunogen

Recombinant fusion protein containing a sequence corresponding to amino acids 27-343 of human IL13RA2 (NP\_000631.1).

### Synonyms

CT19; IL-13R; IL13BP; CD213A2; IL13RA2

## Contact



[www.abclonal.com](http://www.abclonal.com)

## Product Information

### Source

Rabbit

### Isotype

IgG

### Purification

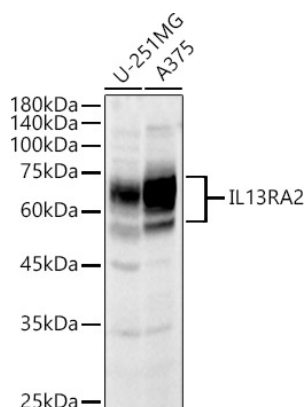
Affinity purification

### Storage

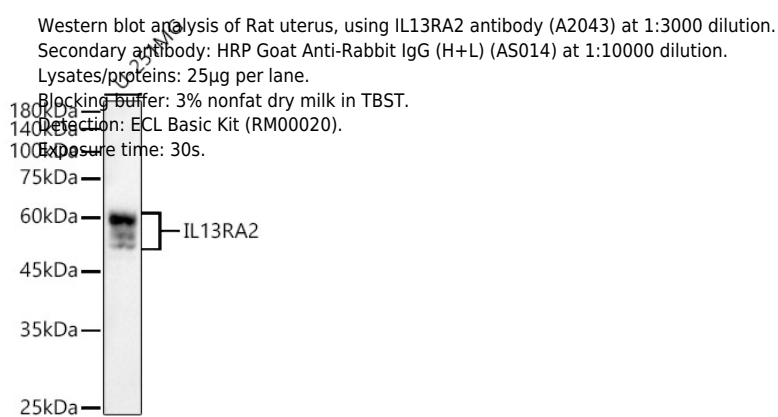
Store at -20°C. Avoid freeze / thaw cycles.

Buffer: PBS with 0.02% sodium azide, 50% glycerol, pH7.3.

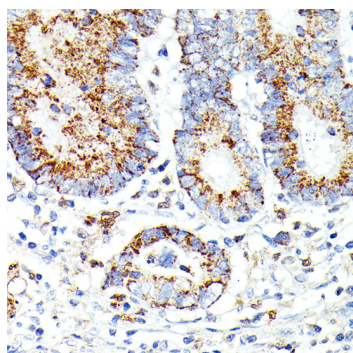
## Validation Data



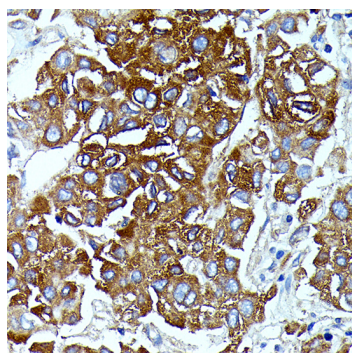
Western blot analysis of various lysates, using IL13RA2 antibody (A2043) at 1:3000 dilution.  
Secondary antibody: HRP Goat Anti-Rabbit IgG (H+L) (A5014) at 1:10000 dilution.  
Lysates/proteins: 25µg per lane.  
Blocking buffer: 3% nonfat dry milk in TBST.  
Detection: ECL Basic Kit (RM00020).  
Exposure time: 20s.



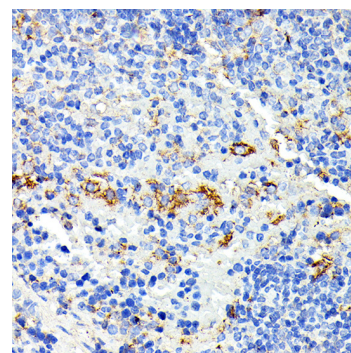
Western blot analysis of Rat uterus, using IL13RA2 antibody (A2043) at 1:3000 dilution.  
Secondary antibody: HRP Goat Anti-Rabbit IgG (H+L) (A5014) at 1:10000 dilution.  
Lysates/proteins: 25µg per lane.  
Blocking buffer: 3% nonfat dry milk in TBST.  
Detection: ECL Basic Kit (RM00020).  
Exposure time: 30s.



Immunohistochemistry analysis of paraffin-embedded Human colon carcinoma using IL13RA2 Rabbit pAb (A2043) at dilution of 1:100 (40x lens). Perform high pressure antigen retrieval with 10 mM citrate buffer pH 6.0 before commencing with IHC staining protocol.



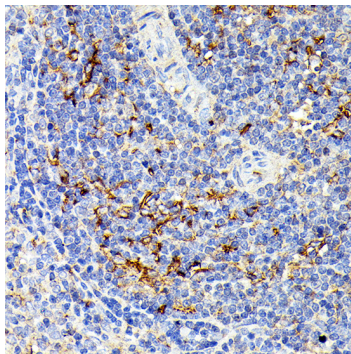
Immunohistochemistry analysis of paraffin-embedded Human liver cancer using IL13RA2 Rabbit pAb (A2043) at dilution of 1:100 (40x lens). Perform high pressure antigen retrieval with 10 mM citrate buffer pH 6.0 before commencing with IHC staining protocol.



Immunohistochemistry analysis of paraffin-embedded Mouse spleen using IL13RA2 Rabbit pAb (A2043) at dilution of 1:100 (40x lens). Perform high pressure antigen retrieval with 10 mM citrate buffer pH 6.0 before commencing with IHC staining protocol.

## Validation Data

---



Immunohistochemistry analysis of paraffin-embedded Rat spleen using IL13RA2 Rabbit pAb (A2043) at dilution of 1:100 (40x lens). Perform high pressure antigen retrieval with 10 mM citrate buffer pH 6.0 before commencing with IHC staining protocol.