

A20356

Leader in Biomolecular Solutions for Life Science



## GIMAP1 Rabbit pAb

Catalog No.: A20356

### Basic Information

#### Observed MW

34kDa

#### Calculated MW

34kDa

#### Category

Antibody

#### Applications

WB, ELISA

#### Cross-Reactivity

Rat

### Background

This gene encodes a protein belonging to the GTP-binding superfamily and to the immuno-associated nucleotide (IAN) subfamily of nucleotide-binding proteins. In humans, the IAN subfamily genes are located in a cluster at 7q36.1. This gene is thought to be involved in the differentiation of T helper (Th) cells of the Th1 lineage, and the related mouse gene has been shown to be critical for the development of mature B and T lymphocytes. Read-through transcription exists between this gene and the downstream GIMAP5 (GTPase, IMAP family member 5) gene.

### Recommended Dilutions

WB 1:500 - 1:1000

### Immunogen Information

#### Gene ID

170575

#### Swiss Prot

Q8WWP7

#### Immunogen

Recombinant Protein corresponding to a sequence within amino acids 140-280 of human GIMAP1 (NP\_570115.1).

#### Synonyms

IAN2; IMAP1; HIMAP1; IMAP38; GIMAP1

### Contact



[www.abclonal.com](http://www.abclonal.com)

### Product Information

#### Source

Rabbit

#### Isotype

IgG

#### Purification

Affinity purification

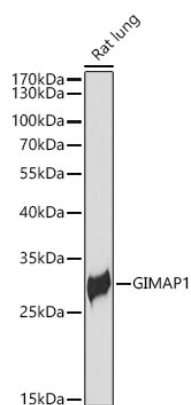
#### Storage

Store at -20°C. Avoid freeze / thaw cycles.

Buffer: PBS with 0.01% thimerosal, 50% glycerol, pH7.3.

## Validation Data

---



Western blot analysis of lysates from Rat lung using GIMAP1 Rabbit pAb(A20356) at 1:1000 dilution.  
Secondary antibody: HRP Goat Anti-Rabbit IgG (H+L) (A5014) at 1:10000 dilution.  
Lysates/proteins: 25 µg per lane.  
Blocking buffer: 3% nonfat dry milk in TBST.  
Detection: ECL Basic Kit (RM00020).  
Exposure time: 15s.