

PGE receptor EP4 (PTGER4) Rabbit pAb

Catalog No.: A20295

Basic Information

Observed MW

52kDa

Calculated MW

53kDa

Category

Primary antibody

Applications

ELISA, WB

Cross-Reactivity

Rat

Background

The protein encoded by this gene is a member of the G-protein coupled receptor family. This protein is one of four receptors identified for prostaglandin E2 (PGE2). This receptor can activate T-cell factor signaling. It has been shown to mediate PGE2 induced expression of early growth response 1 (EGR1), regulate the level and stability of cyclooxygenase-2 mRNA, and lead to the phosphorylation of glycogen synthase kinase-3. Knockout studies in mice suggest that this receptor may be involved in the neonatal adaptation of circulatory system, osteoporosis, as well as initiation of skin immune responses.

Recommended Dilutions

WB 1:500 - 1:1000

Immunogen Information

Gene ID

5734

Swiss Prot

P35408

Immunogen

Recombinant fusion protein containing a sequence corresponding to amino acids 1-488 of human PGE receptor EP4 (PTGER4) (P35408).

Synonyms

EP4; EP4R; PGE receptor EP4 (PTGER4)

Contact

 | www.abclonal.com

Product Information

Source

Rabbit

Isotype

IgG

Purification

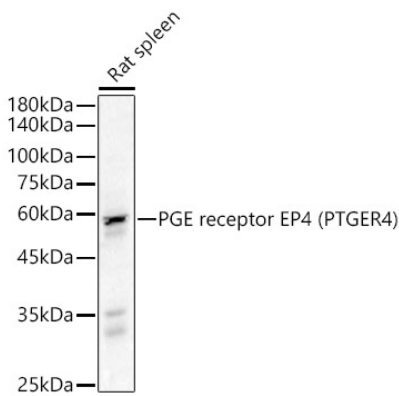
Affinity purification

Storage

Store at -20°C. Avoid freeze / thaw cycles.

Buffer: PBS with 0.05% proclin300, 50% glycerol, pH7.3.

Validation Data



Western blot analysis of Rat spleen, using PGE receptor EP4 (PTGER4) antibody (A20295) at 1:1000 dilution.
Secondary antibody: HRP Goat Anti-Rabbit IgG (H+L) (A5014) at 1:10000 dilution.
Lysates/proteins: 25µg per lane.
Blocking buffer: 3% nonfat dry milk in TBST.
Detection: ECL Basic Kit (RM00020).
Exposure time: 30s.