

A20254

Leader in Biomolecular Solutions for Life Science



EPHA3/EPHA4/EPHA5 pAb

Catalog No.: A20254

Basic Information

Observed MW

Refer to figures

Calculated MW

Category

Polyclonal Antibody

Applications

IHC-P, IF/ICC, ELISA

Cross-Reactivity

Human, Mouse, Rat

Background

Receptor tyrosine kinase which binds promiscuously membrane-bound ephrin family ligands residing on adjacent cells, leading to contact-dependent bidirectional signaling into neighboring cells. The signaling pathway downstream of the receptor is referred to as forward signaling while the signaling pathway downstream of the ephrin ligand is referred to as reverse signaling. Highly promiscuous for ephrin-A ligands it binds preferentially EFNA5. Upon activation by EFNA5 regulates cell-cell adhesion, cytoskeletal organization and cell migration. Plays a role in cardiac cells migration and differentiation and regulates the formation of the atrioventricular canal and septum during development probably through activation by EFNA1. Involved in the retinotectal mapping of neurons. May also control the segregation but not the guidance of motor and sensory axons during neuromuscular circuit development.

Recommended Dilutions

IHC-P	1:50 - 1:200
IF/ICC	1:50 - 1:200

Immunogen Information

Gene ID

2042/2043/2044

Swiss Prot

P29320/P54764/P54756

Immunogen

A synthetic peptide corresponding to a sequence within amino acids 700-800 of human EPHA3/EPHA4/EPHA5 (NP_005224.2).

Synonyms

Contact



www.abclonal.com

Product Information

Source

Rabbit

Isotype

IgG

Purification

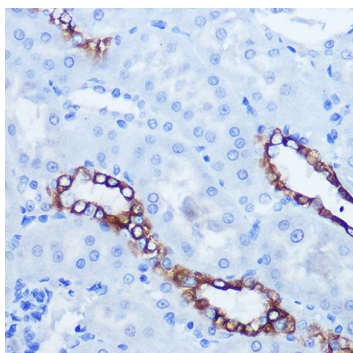
Affinity purification

Storage

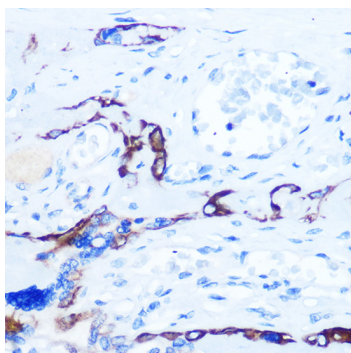
Store at -20°C. Avoid freeze / thaw cycles.

Buffer: PBS with 0.01% thimerosal, 50% glycerol, pH7.3.

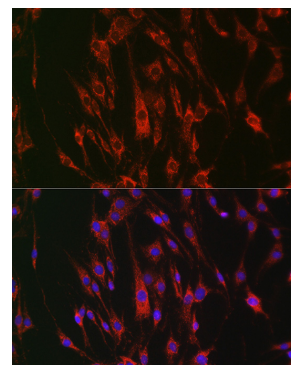
Validation Data



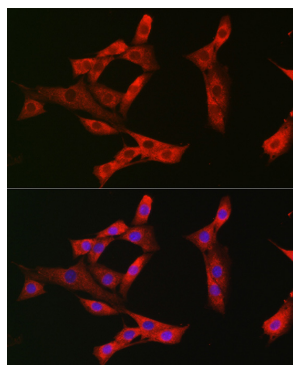
Immunohistochemistry analysis of EPHA3/EPHA4/EPHA5 pAb in paraffin-embedded rat kidney using EPHA3/EPHA4/EPHA5 pAb (A20254) at dilution of 1:100 (40x lens). Perform microwave antigen retrieval with 10 mM Tris/EDTA buffer pH 9.0 before commencing with IHC staining protocol.



Immunohistochemistry analysis of EPHA3/EPHA4/EPHA5 pAb in paraffin-embedded human placenta using EPHA3/EPHA4/EPHA5 pAb (A20254) at dilution of 1:100 (40x lens). Perform microwave antigen retrieval with 10 mM Tris/EDTA buffer pH 9.0 before commencing with IHC staining protocol.



Immunofluorescence analysis of C6 cells using EPHA3/EPHA4/EPHA5 pAb (A20254) at dilution of 1:100 (40x lens). Blue: DAPI for nuclear staining.



Immunofluorescence analysis of NIH/3T3 cells using EPHA3/EPHA4/EPHA5 pAb (A20254) at dilution of 1:100 (40x lens). Blue: DAPI for nuclear staining.