

A20234

Leader in Biomolecular Solutions for Life Science



SARS-CoV-2 ORF3A Rabbit pAb

Catalog No.: A20234

2 Publications

Basic Information

Observed MW

35kDa

Calculated MW

31kDa

Category

Mouse Monoclonal Antibody

Applications

WB, ELISA

Cross-Reactivity

SARS-CoV-2

Background

Severe acute respiratory syndrome coronavirus 2 (SARS-CoV-2) is an enveloped, positive-sense, single-stranded RNA virus that causes coronavirus disease 2019 (COVID-19). Virus particles include the RNA genetic material and structural proteins needed for invasion of host cells. Once inside the cell the infecting RNA is used to encode structural proteins that make up virus particles, nonstructural proteins that direct virus assembly, transcription, replication and host control and accessory proteins whose function has not been determined.~ ORF3a encodes a viral accessory protein. Based on its similarity to other coronavirus proteins, ORF3a protein is thought to be a protein with ion channel activity (viroporin) that activates the NLRP3 inflammasome. ORF3a may also play a role in virus replication and pathogenesis.

Recommended Dilutions

WB 1:2000 - 1:6000

Immunogen Information

Gene ID

43740569

Swiss Prot

P0DTC3

Immunogen

A synthetic peptide corresponding to a sequence within amino acids 100-200 of coronavirus ORF3A (YP_009724391.1).

Synonyms

Contact



www.abclonal.com

Product Information

Source

Rabbit

Isotype

IgG

Purification

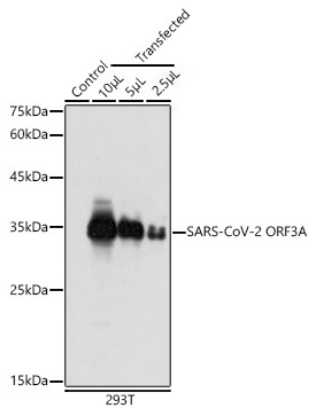
Affinity purification

Storage

Store at -20°C. Avoid freeze / thaw cycles.

Buffer: PBS with 0.01% thimerosal, 50% glycerol, pH7.3.

Validation Data



Western blot analysis of lysates from 293T cells, using SARS-CoV-2 ORF3A Rabbit pAb (A20234) at 1:5000 dilution.

Secondary antibody: HRP Goat Anti-Rabbit IgG (H+L) (AS014) at 1:10000 dilution.

Lysates/proteins: 25µg per lane.

Blocking buffer: 3% nonfat dry milk in TBST.

Detection: ECL Basic Kit (RM00020).

Exposure time: 90s.