

A20158

Leader in Biomolecular Solutions for Life Science



## HOXB2 Rabbit pAb

Catalog No.: A20158

### Basic Information

**Observed MW**

35kDa

**Calculated MW**

38kDa

**Category**

Polyclonal Antibody

**Applications**

WB, ELISA

**Cross-Reactivity**

Mouse, Rat

### Background

This gene is a member of the Antp homeobox family and encodes a nuclear protein with a homeobox DNA-binding domain. It is included in a cluster of homeobox B genes located on chromosome 17. The encoded protein functions as a sequence-specific transcription factor that is involved in development. Increased expression of this gene is associated with pancreatic cancer.

### Recommended Dilutions

WB 1:500 - 1:1000

### Immunogen Information

**Gene ID**

3212

**Swiss Prot**

P14652

**Immunogen**

Recombinant fusion protein containing a sequence corresponding to amino acids 50-140 of human HOXB2 (NP\_002136.1).

**Synonyms**

K8; HOX2; HOX2H; Hox-2.8; HOXB2

### Contact



[www.abclonal.com](http://www.abclonal.com)

### Product Information

**Source**

Rabbit

**Isotype**

IgG

**Purification**

Affinity purification

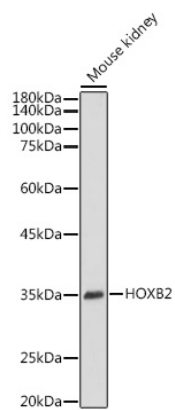
**Storage**

Store at -20°C. Avoid freeze / thaw cycles.

Buffer: PBS with 0.01% thimerosal, 50% glycerol, pH7.3.

## Validation Data

---



Western blot analysis of extracts of Mouse kidney, using HOXB2 antibody (A20158) at 1:1000 dilution.  
Secondary antibody: HRP Goat Anti-Rabbit IgG (H+L) (A5014) at 1:10000 dilution.  
Lysates/proteins: 25µg per lane.  
Blocking buffer: 3% nonfat dry milk in TBST.  
Detection: ECL Basic Kit (RM00020).  
Exposure time: 10s.