

A20137

Leader in Biomolecular Solutions for Life Science



SARS-CoV-2 Spike Rabbit pAb

Catalog No.: A20137

1 Publications

Basic Information

Observed MW

110kDa/180kDa

Calculated MW

141kDa

Category

Polyclonal Antibody

Applications

WB,IF/ICC,IP,ELISA,DB

Cross-Reactivity

SARS-CoV-2

Background

Severe acute respiratory syndrome coronavirus 2 (SARS-CoV-2) is an enveloped, positive-sense, single-stranded RNA virus that causes coronavirus disease 2019 (COVID-19). Virus particles include the RNA genetic material and structural proteins needed for invasion of host cells. Once inside the cell the infecting RNA is used to encode structural proteins that make up virus particles, nonstructural proteins that direct virus assembly, transcription, replication and host control and accessory proteins whose function has not been determined.~ The structural proteins of SARS-CoV-2 include the envelope protein (E), spike or surface glycoprotein (S), membrane protein (M) and the nucleocapsid protein (N). The spike glycoprotein is found on the outside of the virus particle and gives coronavirus viruses their crown-like appearance. This glycoprotein mediates attachment of the virus particle and entry into the host cell. S protein is an important target for vaccine development, antibody therapies and diagnostic antigen-based tests.

Recommended Dilutions

DB 1:500 - 1:2000

WB 1:500 - 1:1000

IF/ICC 1:50 - 1:200

IP 0.5µg-4µg antibody for
200µg-400µg extracts of
whole cells

Immunogen Information

Gene ID

43740568

Swiss Prot

P0DTC2

Immunogen

A synthetic peptide corresponding to a sequence within amino acids 600-700 of coronavirus Spike (YP_009724390.1).

Synonyms

spike glycoprotein; SARS-CoV-2 Spike

Contact



www.abclonal.com

Product Information

Source

Rabbit

Isotype

IgG

Purification

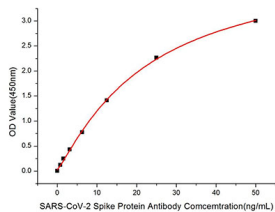
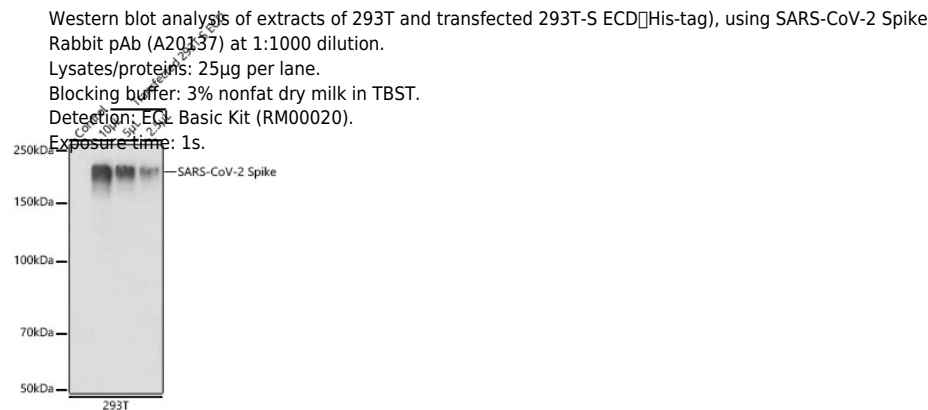
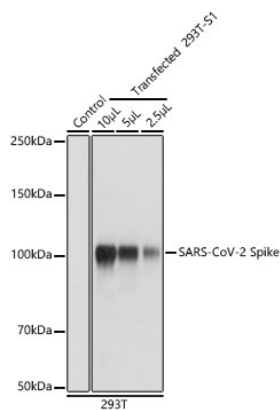
Affinity purification

Storage

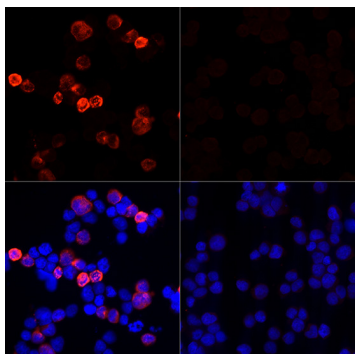
Store at -20°C. Avoid freeze / thaw cycles.

Buffer: PBS with 0.05% proclin300,50% glycerol,pH7.3.

Validation Data

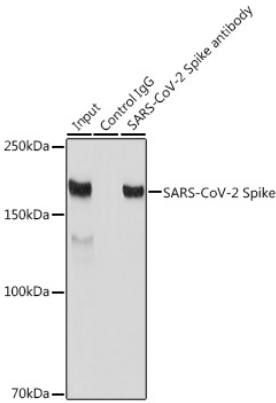


Immobilized Recombinant SARS-COV-2 S1+S2 ECD(S-ECD) Protein (RP01283) at 1µg/mL (100µL/well) can bind SARS-CoV-2 Spike Rabbit pAb (A20137) with a linear range of 0.78-50ng/mL.



Immunofluorescence analysis of 293T cells transfected with SARS-CoV-2 Spike protein and untreated 293T cells use SARS-CoV-2 Spike Rabbit pAb (A20137) at dilution of 1:100 (40x lens). Secondary antibody: Cy3 Goat Anti-Rabbit IgG (H+L) (AS007) at 1:500 dilution. Blue: DAPI for nuclear staining.

Validation Data



Immunoprecipitation analysis of 300 µg extracts of 293T cells using 3 µg SARS-CoV-2 Spike antibody (A20137). Western blot was performed from the immunoprecipitate using SARS-CoV-2 Spike antibody (A20137) at a dilution of 1:1000.