

A19983

Leader in Biomolecular Solutions for Life Science



[KO Validated] LAMTOR1 Rabbit pAb

Catalog No.: A19983 **KO** Validated

Basic Information

Observed MW

18kDa

Calculated MW

18kDa

Category

Polyclonal Antibody

Applications

WB,IF/ICC,ELISA

Cross-Reactivity

Human,Mouse,Rat

Background

Enables GTPase binding activity. Contributes to guanyl-nucleotide exchange factor activity and molecular adaptor activity. Involved in several processes, including cholesterol homeostasis; positive regulation of TOR signaling; and regulation of cholesterol transport. Located in lysosome. Part of Ragulator complex.

Recommended Dilutions

WB 1:500 - 1:1000

IF/ICC 1:50 - 1:100

Immunogen Information

Gene ID

55004

Swiss Prot

Q6IAA8

Immunogen

Recombinant fusion protein containing a sequence corresponding to amino acids 1-161 of human LAMTOR1 (NP_060377.1).

Synonyms

p18; PDRO; C11orf59; p27RF-Rho; Ragulator1; R1

Contact



www.abclonal.com

Product Information

Source

Rabbit

Isotype

IgG

Purification

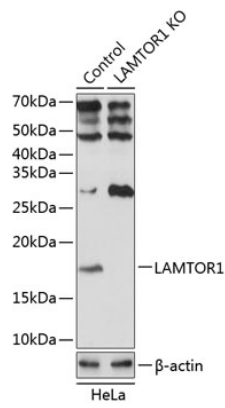
Affinity purification

Storage

Store at -20°C. Avoid freeze / thaw cycles.

Buffer: PBS with 0.01% thimerosal, 50% glycerol, pH7.3.

Validation Data



Western blot analysis of lysates from wild type (WT) and LAMTOR1 knockout (KO) HeLa cells, using [KO Validated] LAMTOR1 Rabbit pAb (A19983) at 1:1000 dilution.
Secondary antibody: HRP Goat Anti-Rabbit IgG (H+L) (AS014) at 1:10000 dilution.
Lysates/proteins: 25µg per lane.
Blocking buffer: 3% nonfat dry milk in TBST.
Detection: ECL Basic Kit (RM00020).
Exposure time: 1s.