

A19947

Leader in Biomolecular Solutions for Life Science



## [KO Validated] SPK Rabbit pAb

Catalog No.: A19947 **KO** Validated

### Basic Information

#### Observed MW

36kDa

#### Calculated MW

36kDa

#### Category

Mouse Monoclonal Antibody

#### Applications

WB, ELISA

#### Cross-Reactivity

Human, Mouse, Rat

### Background

This gene encodes a serine/threonine protein kinase related to the dual specific mitogen-activated protein kinase kinase (MAPKK) family. Evidence suggests that mitotic phosphorylation is required for its catalytic activity. The encoded protein may be involved in the activation of lymphoid cells and support testicular functions, with a suggested role in the process of spermatogenesis. Overexpression of this gene has been implicated in tumorigenesis. Alternative splicing results in multiple transcript variants.

### Recommended Dilutions

WB 1:500 - 1:2000

### Immunogen Information

#### Gene ID

55872

#### Swiss Prot

Q96KB5

#### Immunogen

Recombinant fusion protein containing a sequence corresponding to amino acids 1-322 of human SPK (NP\_060962.2).

#### Synonyms

SPK; CT84; TOPK; HEL164; Nori-3; PK

### Contact



[www.abclonal.com](http://www.abclonal.com)

### Product Information

#### Source

Rabbit

#### Isotype

IgG

#### Purification

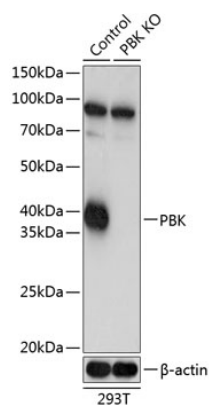
Affinity purification

#### Storage

Store at -20°C. Avoid freeze / thaw cycles.

Buffer: PBS with 0.01% thimerosal, 50% glycerol, pH 7.3.

## Validation Data



Western blot analysis of lysates from wild type (WT) and SPK knockout (KO) 293T cells, using [KO Validated] SPK Rabbit pAb (A19947) at 1:1000 dilution.  
Secondary antibody: HRP Goat Anti-Rabbit IgG (H+L) (AS014) at 1:10000 dilution.  
Lysates/proteins: 25µg per lane.  
Blocking buffer: 3% nonfat dry milk in TBST.  
Detection: ECL Basic Kit (RM00020).  
Exposure time: 1s.