

A19874

Leader in Biomolecular Solutions for Life Science



## [KO Validated] GBP2 Rabbit pAb

Catalog No.: A19874 **KO** Validated

### Basic Information

#### Observed MW

67kDa

#### Calculated MW

67kDa

#### Category

Polyclonal Antibody

#### Applications

WB, ELISA

#### Cross-Reactivity

Human

### Background

This gene belongs to the guanine-binding protein (GBP) family, which includes interferon-induced proteins that can bind to guanine nucleotides (GMP, GDP and GTP). The encoded protein is a GTPase which hydrolyzes GTP, predominantly to GDP. The protein may play a role as a marker of squamous cell carcinomas.

### Recommended Dilutions

WB 1:500 - 1:2000

### Immunogen Information

#### Gene ID

2634

#### Swiss Prot

P32456

#### Immunogen

Recombinant fusion protein containing a sequence corresponding to amino acids 410-520 of human GBP2 (NP\_004111.2).

#### Synonyms

GBP2; P2

### Contact



[www.abclonal.com](http://www.abclonal.com)

### Product Information

#### Source

Rabbit

#### Isotype

IgG

#### Purification

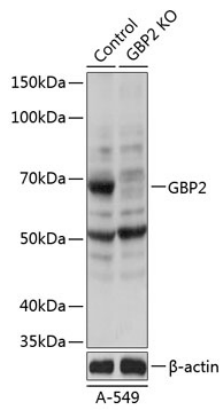
Affinity purification

#### Storage

Store at -20°C. Avoid freeze / thaw cycles.

Buffer: PBS with 0.01% thimerosal, 50% glycerol, pH 7.3.

## Validation Data



Western blot analysis of lysates from wild type (WT) and GBP2 knockout (KO) A-549 cells, using [KO Validated] GBP2 Rabbit pAb (A19874) at 1:1000 dilution.  
Secondary antibody: HRP Goat Anti-Rabbit IgG (H+L) (AS014) at 1:10000 dilution.  
Lysates/proteins: 25 $\mu$ g per lane.  
Blocking buffer: 3% nonfat dry milk in TBST.  
Detection: ECL Basic Kit (RM00020).  
Exposure time: 1s.