

A19856

Leader in Biomolecular Solutions for Life Science



[KO Validated] NRBF2 Rabbit pAb

Catalog No.: A19856 **KO** Validated

Basic Information

Observed MW

40kDa

Calculated MW

32kDa

Category

Polyclonal Antibody

Applications

WB, ELISA

Cross-Reactivity

Human, Mouse, Rat

Background

Involved in autophagy. Located in cytoplasm. Colocalizes with phosphatidylinositol 3-kinase complex, class III.

Recommended Dilutions

WB 1:500 - 1:2000

Immunogen Information

Gene ID

29982

Swiss Prot

Q96F24

Immunogen

Recombinant fusion protein containing a sequence corresponding to amino acids 10-220 of human NRBF2 (NP_110386.2).

Synonyms

COPR; COPR1; COPR2; NRBF-2; F2

Contact



www.abclonal.com

Product Information

Source

Rabbit

Isotype

IgG

Purification

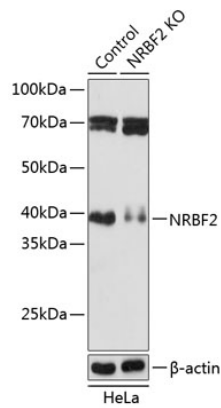
Affinity purification

Storage

Store at -20°C. Avoid freeze / thaw cycles.

Buffer: PBS with 0.01% thimerosal, 50% glycerol, pH 7.3.

Validation Data



Western blot analysis of lysates from wild type (WT) and NRB2 knockout (KO) HeLa cells, using [KO Validated] NRB2 Rabbit pAb (A19856) at 1:1000 dilution.
Secondary antibody: HRP Goat Anti-Rabbit IgG (H+L) (AS014) at 1:10000 dilution.
Lysates/proteins: 25 μ g per lane.
Blocking buffer: 3% nonfat dry milk in TBST.
Detection: ECL Basic Kit (RM00020).
Exposure time: 5s.