

[KO Validated] ATG4A Rabbit pAb

Catalog No.: A19844 **KO** Validated

Basic Information

Observed MW

50kDa

Calculated MW

45kDa

Category

Primary antibody

Applications

ELISA, WB

Cross-Reactivity

Human, Mouse

Background

Autophagy is the process by which endogenous proteins and damaged organelles are destroyed intracellularly. Autophagy is postulated to be essential for cell homeostasis and cell remodeling during differentiation, metamorphosis, non-apoptotic cell death, and aging. Reduced levels of autophagy have been described in some malignant tumors, and a role for autophagy in controlling the unregulated cell growth linked to cancer has been proposed. This gene encodes a member of the autophagin protein family. The encoded protein is also designated as a member of the C-54 family of cysteine proteases.

Recommended Dilutions

WB 1:500 - 1:2000

Immunogen Information

Gene ID

115201

Swiss Prot

Q8WYN0

Immunogen

Recombinant fusion protein containing a sequence corresponding to amino acids 289-398 of human ATG4A (NP_443168.2).

Synonyms

APG4A; AUTL2; HsAPG4A; 4A

Contact

 | www.abclonal.com

Product Information

Source

Rabbit

Isotype

IgG

Purification

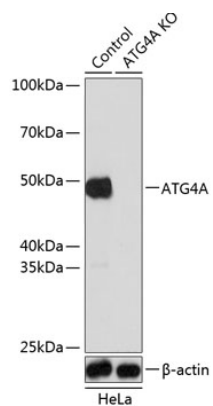
Affinity purification

Storage

Store at -20°C. Avoid freeze / thaw cycles.

Buffer: PBS with 0.01% thimerosal, 50% glycerol, pH7.3.

Validation Data



Western blot analysis of lysates from wild type (WT) and ATG4A knockout (KO) HeLa cells, using [KO Validated] ATG4A Rabbit pAb (A19844) at 1:1000 dilution.

Secondary antibody: HRP Goat Anti-Rabbit IgG (H+L) (A5014) at 1:10000 dilution.

Lysates/proteins: 25 μ g per lane.

Blocking buffer: 3% nonfat dry milk in TBST.

Detection: ECL Basic Kit (RM00020).

Exposure time: 5s.