

A19790

Leader in Biomolecular Solutions for Life Science



## GOLPH4 Rabbit mAb

Catalog No.: A19790

Recombinant

### Basic Information

**Observed MW**

130kDa

**Calculated MW**

82kDa

**Category**

SMab Recombinant Monoclonal Antibody

**Applications**

WB, ELISA

**Cross-Reactivity**

Human

**CloneNo number**

ARC2315

### Background

The Golgi complex plays a key role in the sorting and modification of proteins exported from the endoplasmic reticulum. The protein encoded by this gene is a type II Golgi-resident protein. It may process proteins synthesized in the rough endoplasmic reticulum and assist in the transport of protein cargo through the Golgi apparatus.

### Recommended Dilutions

WB 1:500 - 1:1000

### Immunogen Information

**Gene ID**

27333

**Swiss Prot**

O00461

**Immunogen**

A synthetic peptide corresponding to a sequence within amino acids 1-100 of human GOLPH4 (O00461).

**Synonyms**

P138; GIMPC; GOLPH4; GPP130

### Contact



[www.abclonal.com](http://www.abclonal.com)

### Product Information

**Source**

Rabbit

**Isotype**

IgG

**Purification**

Affinity purification

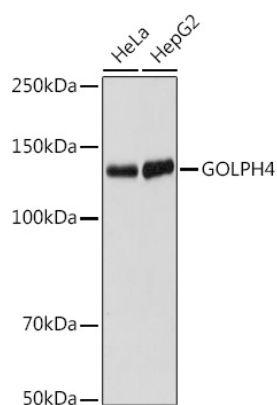
**Storage**

Store at -20°C. Avoid freeze / thaw cycles.

Buffer: PBS with 0.02% sodium azide, 0.05% BSA, 50% glycerol, pH7.3.

## Validation Data

---



Western blot analysis of extracts of various cell lines, using GOLPH4 antibody (A19790) at 1:1000 dilution.  
Secondary antibody: HRP Goat Anti-Rabbit IgG (H+L) (AS014) at 1:10000 dilution.  
Lysates/proteins: 25µg per lane.  
Blocking buffer: 3% nonfat dry milk in TBST.  
Detection: ECL Enhanced Kit (RM00021).  
Exposure time: 60s.