

A19765

Leader in Biomolecular Solutions for Life Science



## WDR4 Rabbit mAb

Catalog No.: A19765

Recombinant

1 Publications

### Basic Information

#### Observed MW

49kDa

#### Calculated MW

45kDa

#### Category

SMab Recombinant Monoclonal Antibody

#### Applications

WB, IHC-P, ELISA

#### Cross-Reactivity

Human, Mouse, Rat

#### CloneNo number

ARC2292

### Background

This gene encodes a member of the WD repeat protein family. WD repeats are minimally conserved regions of approximately 40 amino acids typically bracketed by gly-his and trp-aspartate (GH-WD), which may facilitate formation of heterotrimeric or multiprotein complexes. Members of this family are involved in a variety of cellular processes, including cell cycle progression, signal transduction, apoptosis, and gene regulation. This gene is excluded as a candidate for a form of nonsyndromic deafness (DFNB10), but is still a candidate for other disorders mapped to 21q22.3 as well as for the development of Down syndrome phenotypes. Alternatively spliced transcript variants have been found for this gene.

### Recommended Dilutions

WB	1:500 - 1:2000
IHC-P	1:50 - 1:200

### Immunogen Information

#### Gene ID

10785

#### Swiss Prot

P57081

#### Immunogen

A synthetic peptide corresponding to a sequence within amino acids 250-350 of human WDR4 (P57081).

#### Synonyms

hWH; Wuho; MIGSB; TRM82; GAMOS6; TRMT82; WDR4

### Contact



[www.abclonal.com](http://www.abclonal.com)

### Product Information

#### Source

Rabbit

#### Isotype

IgG

#### Purification

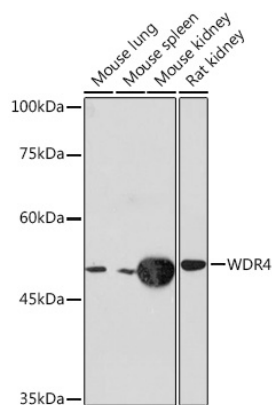
Affinity purification

#### Storage

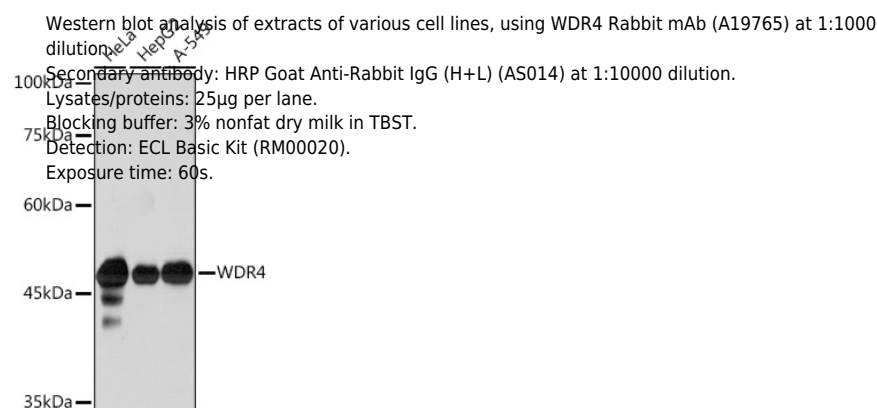
Store at -20°C. Avoid freeze / thaw cycles.

Buffer: PBS with 0.02% sodium azide, 0.05% BSA, 50% glycerol, pH 7.3.

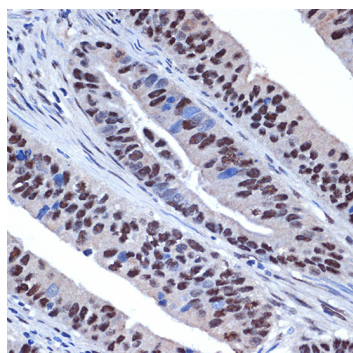
## Validation Data



Western blot analysis of extracts of various cell lines, using WDR4 Rabbit mAb (A19765) at 1:1000 dilution.  
 Secondary antibody: HRP Goat Anti-Rabbit IgG (H+L) (AS014) at 1:10000 dilution.  
 Lysates/proteins: 25µg per lane.  
 Blocking buffer: 3% nonfat dry milk in TBST.  
 Detection: ECL Basic Kit (RM00020).  
 Exposure time: 10s.



Western blot analysis of extracts of various cell lines, using WDR4 Rabbit mAb (A19765) at 1:1000 dilution.  
 Secondary antibody: HRP Goat Anti-Rabbit IgG (H+L) (AS014) at 1:10000 dilution.  
 Lysates/proteins: 25µg per lane.  
 Blocking buffer: 3% nonfat dry milk in TBST.  
 Detection: ECL Basic Kit (RM00020).  
 Exposure time: 60s.



Immunohistochemistry analysis of paraffin-embedded human colon carcinoma using WDR4 Rabbit mAb (A19765) at dilution of 1:100 (40x lens). Perform microwave antigen retrieval with 10 mM Tris/EDTA buffer pH 9.0 before commencing with IHC staining protocol.