

A19753

Leader in Biomolecular Solutions for Life Science



# ROR $\beta$ Rabbit mAb

Catalog No.: A19753

Recombinant

## Basic Information

### Observed MW

53kDa

### Calculated MW

53kDa

### Category

SMab Recombinant Monoclonal Antibody

### Applications

WB, ELISA

### Cross-Reactivity

Human, Mouse, Rat

### CloneNo number

ARC2279

## Background

The protein encoded by this gene is a member of the NR1 subfamily of nuclear hormone receptors. It is a DNA-binding protein that can bind as a monomer or as a homodimer to hormone response elements upstream of several genes to enhance the expression of those genes. The encoded protein has been shown to interact with NM23-2, a nucleoside diphosphate kinase involved in organogenesis and differentiation, and to help regulate the expression of some genes involved in circadian rhythm.

## Recommended Dilutions

WB 1:500 - 1:1000

## Immunogen Information

### Gene ID

6096

### Swiss Prot

Q92753

### Immunogen

A synthetic peptide corresponding to a sequence within amino acids 1-100 of human ROR $\beta$  (Q92753).

### Synonyms

RZRB; EIG15; NR1F2; ROR-BETA; RZR-BETA; bA133M9.1; ROR $\beta$

## Contact



[www.abclonal.com](http://www.abclonal.com)

## Product Information

### Source

Rabbit

### Isotype

IgG

### Purification

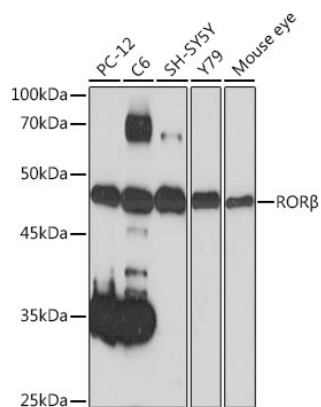
Affinity purification

### Storage

Store at -20°C. Avoid freeze / thaw cycles.

Buffer: PBS with 0.02% sodium azide, 0.05% BSA, 50% glycerol, pH7.3.

## Validation Data



Western blot analysis of extracts of various cell lines, using ROR $\beta$  Rabbit mAb (A19753) at 1:1000 dilution.  
Secondary antibody: HRP Goat Anti-Rabbit IgG (H+L) (AS014) at 1:10000 dilution.  
Lysates/proteins: 25 $\mu$ g per lane.  
Blocking buffer: 3% nonfat dry milk in TBST.  
Detection: ECL Basic Kit (RM00020).  
Exposure time: 60s.