

A19736

Leader in Biomolecular Solutions for Life Science



## ORM1/2 Rabbit mAb

Catalog No.: A19736

Recombinant

### Basic Information

#### Observed MW

45kDa

#### Calculated MW

47kDa

#### Category

SMab Recombinant Monoclonal Antibody

#### Applications

WB,IHC-P,ELISA

#### Cross-Reactivity

Human

#### CloneNo number

ARC2263

### Background

This gene encodes a key acute phase plasma protein. Because of its increase due to acute inflammation, this protein is classified as an acute-phase reactant. The specific function of this protein has not yet been determined; however, it may be involved in aspects of immunosuppression.

### Recommended Dilutions

WB	1:500 - 1:1000
IHC-P	1:50 - 1:200

### Immunogen Information

#### Gene ID

5004/5005

#### Swiss Prot

P02763/P19652

#### Immunogen

A synthetic peptide corresponding to a sequence within amino acids 1-100 of human ORM1/2 (NP\_000598.2).

#### Synonyms

AGP-B; AGP-B'; AGP2; ORM1/2

### Contact



[www.abclonal.com](http://www.abclonal.com)

### Product Information

#### Source

Rabbit

#### Isotype

IgG

#### Purification

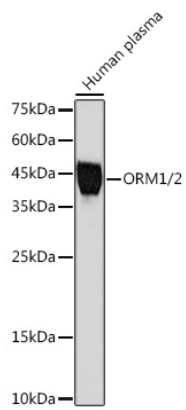
Affinity purification

#### Storage

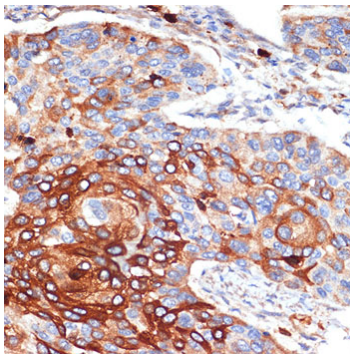
Store at -20°C. Avoid freeze / thaw cycles.

Buffer: PBS with 0.02% sodium azide,0.05% BSA,50% glycerol,pH7.3.

## Validation Data



Western blot analysis of extracts of Human plasma, using ORM1/2 Rabbit mAb (A19736) at 1:1000 dilution.  
Secondary antibody: HRP Goat Anti-Rabbit IgG (H+L) (AS014) at 1:10000 dilution.  
Lysates/proteins: 25µg per lane.  
Blocking buffer: 3% nonfat dry milk in TBST.  
Detection: ECL Basic Kit (RM00020).  
Exposure time: 60s.



Immunohistochemistry analysis of paraffin-embedded human esophageal cancer using ORM1/2 Rabbit mAb (A19736) at dilution of 1:100 (40x lens). Perform microwave antigen retrieval with 10 mM Tris/EDTA buffer pH 9.0 before commencing with IHC staining protocol.