

A19696

Leader in Biomolecular Solutions for Life Science



## Hippocalcin (HPCA) Rabbit mAb

Catalog No.: A19696

Recombinant

### Basic Information

#### Observed MW

22kDa

#### Calculated MW

22kDa

#### Category

SMab Recombinant Monoclonal Antibody

#### Applications

WB, ELISA

#### Cross-Reactivity

Human, Mouse, Rat

#### CloneNo number

ARC2235

### Background

The protein encoded by this gene is a member of neuron-specific calcium-binding proteins family found in the retina and brain. This protein is associated with the plasma membrane. It has similarities to proteins located in the photoreceptor cells that regulate photosignal transduction in a calcium-sensitive manner. This protein displays recoverin activity and a calcium-dependent inhibition of rhodopsin kinase. It is identical to the rat and mouse hippocalcin proteins and thought to play an important role in neurons of the central nervous system in a number of species.

### Recommended Dilutions

WB 1:500 - 1:2000

### Immunogen Information

#### Gene ID

3208

#### Swiss Prot

P84074

#### Immunogen

A synthetic peptide corresponding to a sequence within amino acids 1-100 of human Hippocalcin (HPCA) (P84074).

#### Synonyms

BDR2; DYT2; Hippocalcin (HPCA)

### Contact



[www.abclonal.com](http://www.abclonal.com)

### Product Information

#### Source

Rabbit

#### Isotype

IgG

#### Purification

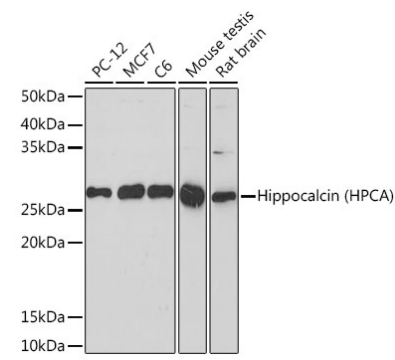
Affinity purification

#### Storage

Store at -20°C. Avoid freeze / thaw cycles.

Buffer: PBS with 0.02% sodium azide, 0.05% BSA, 50% glycerol, pH7.3.

Validation Data



Western blot analysis of extracts of various cell lines, using Hippocalcin (HPCA) (HPCA) Rabbit mAb (A19696) at 1:1000 dilution.  
Secondary antibody: HRP Goat Anti-Rabbit IgG (H+L) (AS014) at 1:10000 dilution.  
Lysates/proteins: 25µg per lane.  
Blocking buffer: 3% nonfat dry milk in TBST.  
Detection: ECL Basic Kit (RM00020).  
Exposure time: 180s.