

A19681

Leader in Biomolecular Solutions for Life Science



GABA A Receptor beta 1 (GABRB1) Rabbit mAb

Catalog No.: A19681 **Recombinant**

Basic Information

Observed MW

54kDa

Calculated MW

54kDa

Category

SMab Recombinant Monoclonal Antibody

Applications

WB, ELISA

Cross-Reactivity

Human, Mouse, Rat

CloneNo number

ARC2229

Background

The gamma-aminobutyric acid (GABA) A receptor is a multisubunit chloride channel that mediates the fastest inhibitory synaptic transmission in the central nervous system. This gene encodes GABA A receptor, beta 1 subunit. It is mapped to chromosome 4p12 in a cluster comprised of genes encoding alpha 4, alpha 2 and gamma 1 subunits of the GABA A receptor. Alteration of this gene is implicated in the pathogenetics of schizophrenia.

Recommended Dilutions

WB 1:500 - 1:1000

Immunogen Information

Gene ID

2560

Swiss Prot

P18505

Immunogen

A synthetic peptide corresponding to a sequence within amino acids 350-450 of human GABA A Receptor beta 1 (GABRB1) (NP_000803.2).

Synonyms

DEE45; EIEE45; GABA A Receptor beta 1 (GABRB1)

Contact



www.abclonal.com

Product Information

Source

Rabbit

Isotype

IgG

Purification

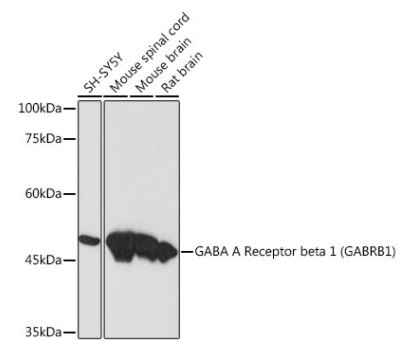
Affinity purification

Storage

Store at -20°C. Avoid freeze / thaw cycles.

Buffer: PBS with 0.02% sodium azide, 0.05% BSA, 50% glycerol, pH 7.3.

Validation Data



Western blot analysis of extracts of various cell lines, using GABA A Receptor beta 1 (GABRB1) (GABRB1) Rabbit mAb (A19681) at 1:1000 dilution.
Secondary antibody: HRP Goat Anti-Rabbit IgG (H+L) (AS014) at 1:10000 dilution.
Lysates/proteins: 25µg per lane.
Blocking buffer: 3% nonfat dry milk in TBST.
Detection: ECL Basic Kit (RM00020).
Exposure time: 90s.