

# NF- $\kappa$ B p65/RelA Rabbit mAb

Catalog No.: A19653 **Recombinant** **56 Publications**

## Basic Information

### Observed MW

65kDa

### Calculated MW

60kDa

### Category

Primary antibody

### Applications

ELISA, WB, IHC-P, IF/ICC, ChIP

### Cross-Reactivity

Human, Mouse, Rat, Monkey

### CloneNo number

ARC51086

## Background

NF- $\kappa$ B is a ubiquitous transcription factor involved in several biological processes. It is held in the cytoplasm in an inactive state by specific inhibitors. Upon degradation of the inhibitor, NF- $\kappa$ B moves to the nucleus and activates transcription of specific genes. NF- $\kappa$ B is composed of NFKB1 or NFKB2 bound to either REL, RELA, or RELB. The most abundant form of NF- $\kappa$ B is NFKB1 complexed with the product of this gene, RELA. Four transcript variants encoding different isoforms have been found for this gene.

## Recommended Dilutions

<b>WB</b>	1:500 - 1:1000
<b>IHC-P</b>	1:500 - 1:1000
<b>IF/ICC</b>	1:50 - 1:200
<b>ChIP</b>	5 $\mu$ g antibody for 10 $\mu$ g-15 $\mu$ g of Chromatin

## Immunogen Information

<b>Gene ID</b>	<b>Swiss Prot</b>
5970	Q04206

### Immunogen

A synthetic peptide corresponding to a sequence within amino acids 450-551 of human NF- $\kappa$ B p65 (Q04206).

### Synonyms

p65; CMCU; NFKB3; AIF3BL3; NF- $\kappa$ B p65/RelA

## Contact

 | [www.abclonal.com](http://www.abclonal.com)

## Product Information

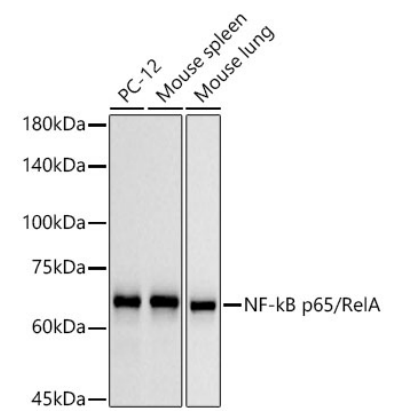
<b>Source</b>	<b>Isotype</b>	<b>Purification</b>
Rabbit	IgG	Affinity purification

### Storage

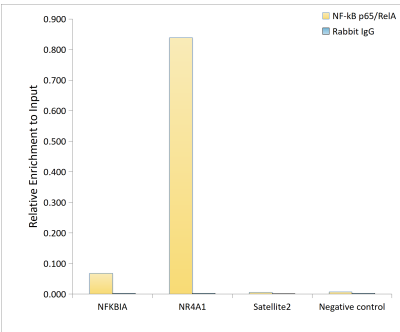
Store at -20°C. Avoid freeze / thaw cycles.

Buffer: PBS with 0.05% proclin300, 0.05% BSA, 50% glycerol, pH7.3.

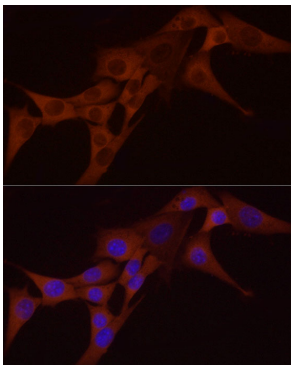
Validation Data



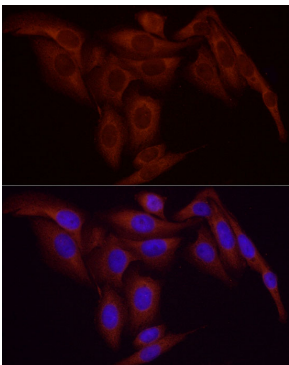
Western blot analysis of various lysates, using NF-kB p65/RelA Rabbit mAb (A19653) at 1:1000 dilution.  
Secondary antibody: HRP Goat Anti-Rabbit IgG (H+L) (AS014) at 1:10000 dilution.  
Lysates/proteins: 25µg per lane.  
Blocking buffer: 3% nonfat dry milk in TBST.  
Detection: ECL Basic Kit (RM00020).  
Exposure time: 10s.



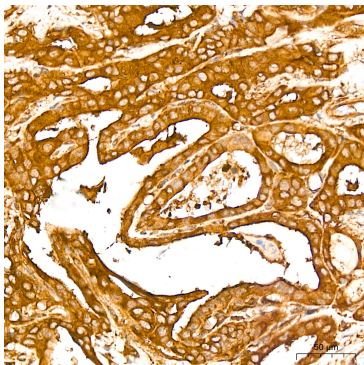
Chromatin immunoprecipitation analysis of extracts of HT-1080 treated by TNF-α (20 ng/ml) at 37°C for 30 minutes, using NF-kB p65/RelA Rabbit mAb antibody (A19653) and rabbit IgG. The amount of immunoprecipitated DNA was checked by quantitative PCR. Histogram was constructed by the ratios of the immunoprecipitated DNA to the input.



Immunofluorescence analysis of NIH/3T3 cells using NF-kB p65/RelA Rabbit mAb (A19653) at dilution of 1:100 (40x lens). Secondary antibody: Cy3 Goat Anti-Rabbit IgG (H+L) (AS007) at 1:500 dilution. Blue: DAPI for nuclear staining.



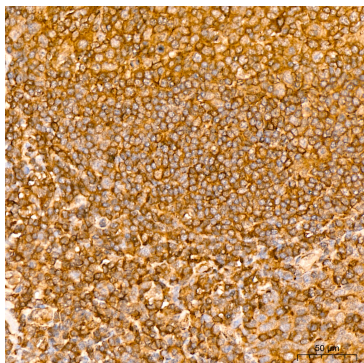
Immunofluorescence analysis of U-2 OS cells using NF-kB p65/RelA Rabbit mAb (A19653) at dilution of 1:100 (40x lens). Secondary antibody: Cy3 Goat Anti-Rabbit IgG (H+L) (AS007) at 1:500 dilution. Blue: DAPI for nuclear staining.



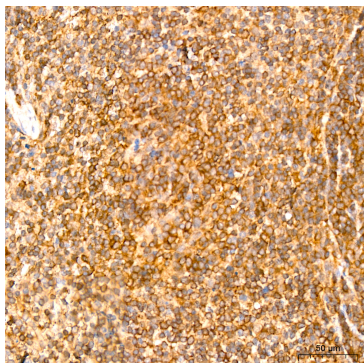
Immunohistochemistry analysis of NF-kB p65/RelA in paraffin-embedded human thyroid cancer tissue using NF-kB p65/RelA Rabbit mAb (A19653) at a dilution of 1:800 (40x lens). High pressure antigen retrieval was performed with 0.01 M citrate buffer (pH 6.0) prior to IHC staining.

## Validation Data

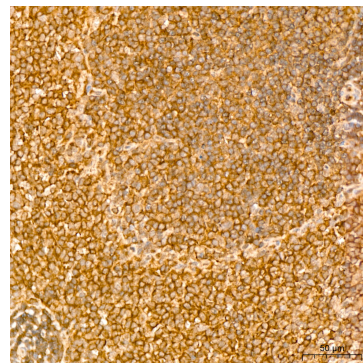
---



Immunohistochemistry analysis of NF-kB p65/RelA in paraffin-embedded human tonsil tissue using NF-kB p65/RelA Rabbit mAb (A19653) at a dilution of 1:800 (40x lens). High pressure antigen retrieval was performed with 0.01 M citrate buffer (pH 6.0) prior to IHC staining.



Immunohistochemistry analysis of NF-kB p65/RelA in paraffin-embedded mouse spleen tissue using NF-kB p65/RelA Rabbit mAb (A19653) at a dilution of 1:800 (40x lens). High pressure antigen retrieval was performed with 0.01 M citrate buffer (pH 6.0) prior to IHC staining.



Immunohistochemistry analysis of NF-kB p65/RelA in paraffin-embedded rat spleen tissue using NF-kB p65/RelA Rabbit mAb (A19653) at a dilution of 1:800 (40x lens). High pressure antigen retrieval was performed with 0.01 M citrate buffer (pH 6.0) prior to IHC staining.