

A19650

Leader in Biomolecular Solutions for Life Science



ATM Rabbit mAb

Catalog No.: A19650

Recombinant

9 Publications

Basic Information

Observed MW

350kDa

Calculated MW

351kDa

Category

SMab Recombinant Monoclonal Antibody

Applications

WB, IHC-P, ELISA

Cross-Reactivity

Human, Mouse

CloneNo number

ARC0129

Background

The protein encoded by this gene belongs to the PI3/PI4-kinase family. This protein is an important cell cycle checkpoint kinase that phosphorylates; thus, it functions as a regulator of a wide variety of downstream proteins, including tumor suppressor proteins p53 and BRCA1, checkpoint kinase CHK2, checkpoint proteins RAD17 and RAD9, and DNA repair protein NBS1. This protein and the closely related kinase ATR are thought to be master controllers of cell cycle checkpoint signaling pathways that are required for cell response to DNA damage and for genome stability. Mutations in this gene are associated with ataxia telangiectasia, an autosomal recessive disorder.

Recommended Dilutions

WB	1:500 - 1:2000
IHC-P	1:50 - 1:200

Immunogen Information

Gene ID

472

Swiss Prot

Q13315

Immunogen

Recombinant fusion protein containing a sequence corresponding to amino acids 2619-2939 of human ATM (Q13315).

Synonyms

AT1; ATA; ATC; ATD; ATE; ATDC; TEL1; TELO1; ATM

Contact



www.abclonal.com

Product Information

Source

Rabbit

Isotype

IgG

Purification

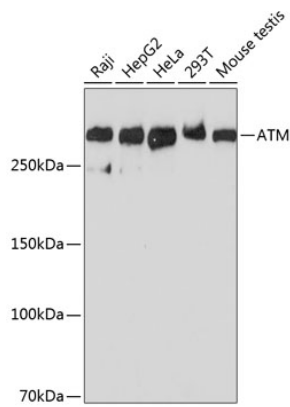
Affinity purification

Storage

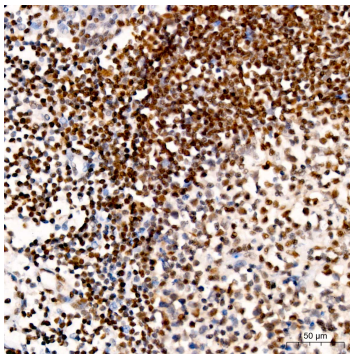
Store at -20°C. Avoid freeze / thaw cycles.

Buffer: PBS with 0.02% sodium azide, 0.05% BSA, 50% glycerol, pH7.3.

Validation Data



Western blot analysis of various lysates using ATM Rabbit mAb (A19650) at 1:1000 dilution.
Secondary antibody: HRP Goat Anti-Rabbit IgG (H+L) (AS014) at 1:10000 dilution.
Lysates/proteins: 25µg per lane.
Blocking buffer: 3% nonfat dry milk in TBST.
Detection: ECL Basic Kit (RM00020).
Exposure time: 90s.



Immunohistochemistry analysis of ATM in paraffin-embedded human tonsil using ATM Rabbit mAb (A19650) at dilution of 1:100 (40x lens). Perform high pressure antigen retrieval with 10 mM Tris/EDTA buffer pH 9.0 before commencing with IHC staining protocol.